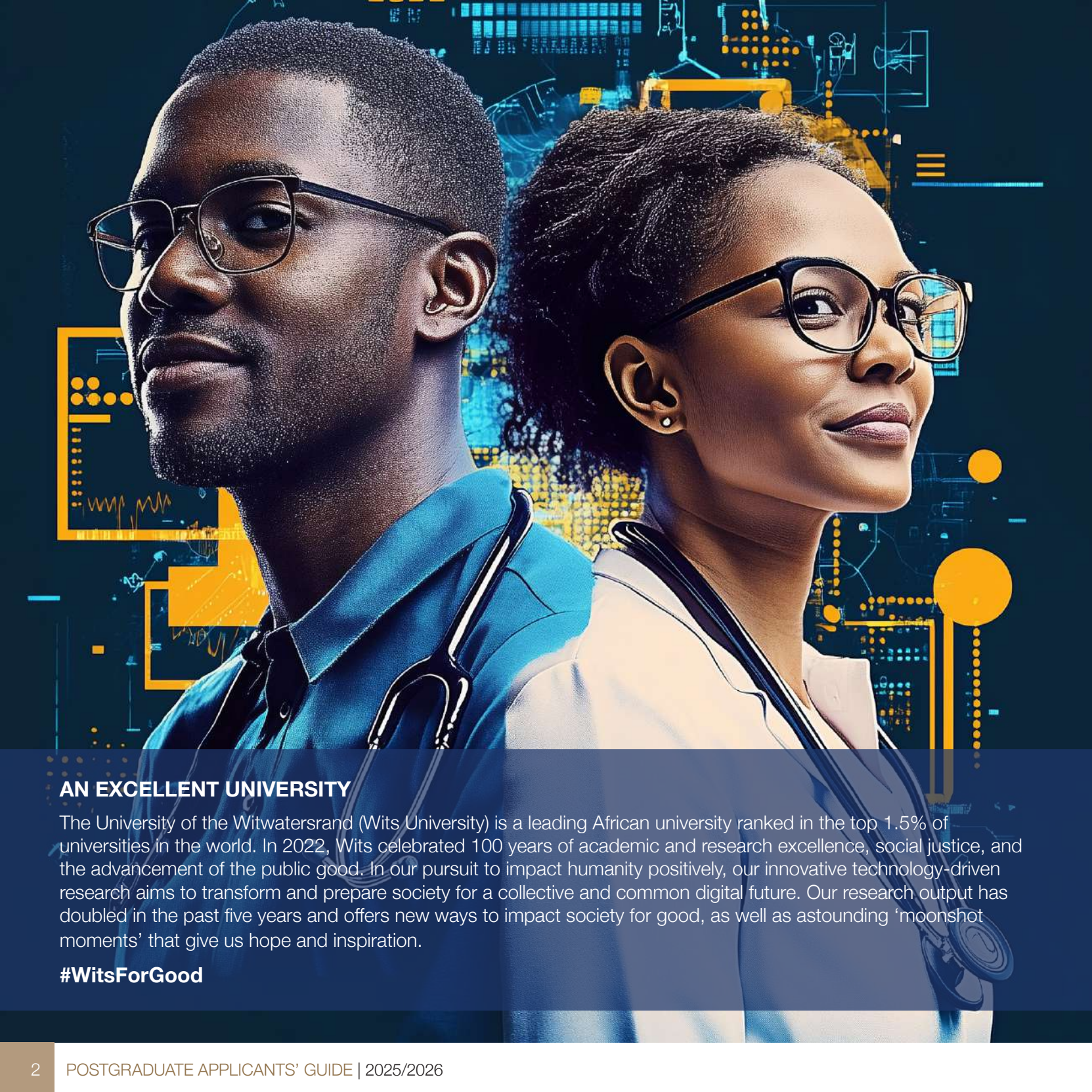




A GUIDE FOR **POSTGRADUATE** **APPLICANTS**

2025/
2026



AN EXCELLENT UNIVERSITY

The University of the Witwatersrand (Wits University) is a leading African university ranked in the top 1.5% of universities in the world. In 2022, Wits celebrated 100 years of academic and research excellence, social justice, and the advancement of the public good. In our pursuit to impact humanity positively, our innovative technology-driven research aims to transform and prepare society for a collective and common digital future. Our research output has doubled in the past five years and offers new ways to impact society for good, as well as astounding ‘moonshot moments’ that give us hope and inspiration.

#WitsForGood

CONTENTS

WELCOME TO WITS4

WITS IN NUMBERS6

POSTGRADUATE STUDIES

POSTGRADUATE STUDIES AT WITS10

POSTGRADUATE RESOURCES.....12

DEVELOPING EMPLOYABLE GRADUATES

ABOUT WITS

A SNAPSHOT OF WITS.....18

AN IT-SAVVY UNIVERSITY.....20

RESEARCH

RESEARCH AT WITS.....22

RESEARCH IMPACT24

5 FACULTIES AND THE PROGRAMMES ON OFFER

FACULTY OF COMMERCE, LAW AND
MANAGEMENT26

FACULTY OF ENGINEERING AND
THE BUILT ENVIRONMENT32

FACULTY OF HEALTH SCIENCES.....35

FACULTY OF HUMANITIES40

FACULTY OF SCIENCE58

APPLYING TO WITS

GENERAL ADMISSION REQUIREMENTS.....64

HOW TO APPLY FOR POSTGRADUATE STUDIES.....65

INTERNATIONAL STUDENTS.....67

CAMPUS HOUSING.....68

FEES AND FUNDING

FUNDING OPTIONS.....69

TUITION FEES BY FACULTY 71



Disclaimer

All the information was correct at the time of going to print and may be subject to change. In accordance with the University rules, policies, procedures and standing orders, all rights are reserved.

WELCOME TO WITS!

Internationally recognised for academic excellence, the University of the Witwatersrand, Johannesburg, remains one of the top universities in Africa, particularly for postgraduate students looking to further their studies and to make a positive impact on society.

At Wits, almost 40% of our student body is made up of postgraduate students. By 2026, we hope to have increased this to 45%. Wits produces high-calibre employable graduates. We stimulate debate and cultivate open-mindedness, critical thinking, creativity and ethics.

Located in the centre of Johannesburg, the economic heartbeat of Africa, Wits gives you the opportunity to produce innovative, impactful research that changes disciplinary thinking, influences policy and generates economic activity.

As a researcher at Wits, you will create new knowledge to address 21st Century challenges and inspire talented young students to shape our shared future. You may even help to inform policies on the sugar tax, national health insurance or the national minimum wage.

Perhaps you will collaborate with the best physicists in the world at CERN, or work with other leading researchers to find solutions to deep-level mining problems in Africa. Maybe you will work with the team that performed the world's first intentional liver transplant from a mother living with HIV to her HIV-negative child.

At Wits, you will find an environment that nurtures the freedom of expression, protects academic liberty, and encourages intellectual debate. We empower our staff

and postgraduate students to push the boundaries of knowledge and to tackle fundamental research questions.

“

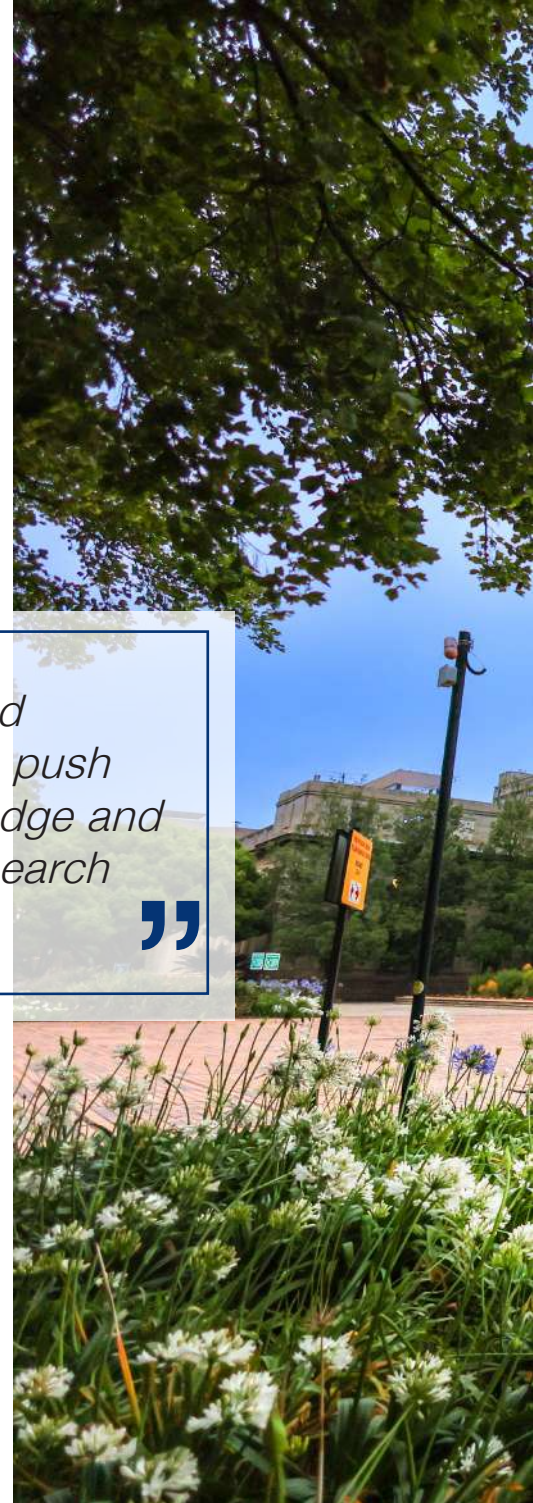
We empower our staff and postgraduate students to push the boundaries of knowledge and to tackle fundamental research questions.

”

At Wits, we produce publications of the highest quality and work hard to sustain the interplay between teaching and research.

We are proud of the leaders who have emerged from Wits, and the roles that some of our students have assumed, both pre- and post-graduation.

We look forward to welcoming a new generation of postgraduates to Wits!





Wits. For Good



WITS IN NUMBERS

5 Faculties

33 Schools



3000 Courses



40704 Students in 2023



Undergraduate - 24 575

Postgraduate - 16 129 (40% of Wits students)

Student enrollment by Faculty



Commerce, Law and Management - **11 136**



Engineering and the Built Environment - **6 954**



Health Sciences - **7 482**



Humanities - **10 146**



Science - **5 528**



7% International Students

17 739 Staff

6 962 Academics

2 500 Joint staff

LOCATED IN THE ECONOMIC HUB OF AFRICA



400+ buildings



7 campuses (including the Wits Rural Campus)



9 libraries



14 residences



Commercial companies
(Wits Health Consortium and Wits Enterprise)



1 short course company (WitsPlus)



Wits owns the **Sterkfontein Caves** in the Cradle of Humankind World Heritage Site and



the **Wits Donald Gordon Medical Centre**, a private teaching hospital

Wits has offices in the
UK, USA, and Australia



DEVELOPING EMPLOYABLE GRADUATES

About **10 000** highly employable students graduate annually



Of those employed, **96%** find employment within six months of graduating

+200 000 
graduates in 102 years

Ranked
98th in the world for
Alumni Employability
(CWUR)



Ranked **54th** in the world based on the number of Fortune Global 500 CEOs (Times Higher Education (THE) Alma Mater Index)



Ranked **21st in the world**
in the QS World University Rankings
2024 for Employment Outcomes

OUR 8 PRIORITY AREAS



Driving digital transformation



Catalysing innovation and entrepreneurship



Ensuring better health for all



Solving global challenges



Advancing society, governance and justice



Future-proofing our national treasures



Developing the next generation of leaders



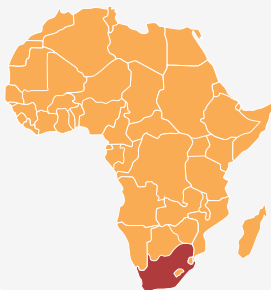
Energising broad-based alumni support

OUR IMPACT FOR GOOD

26

A-rated Academics

(recognised by peers internationally as global leaders in their fields)



10

**South African
Research Chairs**

96%

of Wits authored publications are in
international journals



6

**Department of
Science and Technology-
NRF Centres of Excellence**



**Specialised Wits research
entities = 66, made up of 12 large
institutes, 21 centres, 2 innovation
hubs, 25 research groups, and 6
research units**



**Wits trains the highest number of
clinical specialists in South Africa**



66

**specialised
research entities**



**Wits' research output
has increased by almost
a third in the last**

10 years





Dr Isaac Nape

Isaac Nape, a distinguished PhD graduate, has recently been honoured with the inaugural Optica Emerging Leader in Optics Chair, marking a significant milestone in his burgeoning career in quantum optics. This prestigious position, established by Wits University in collaboration with Optica, aims to spearhead advancements in experimental quantum optics and further research in structured light.

POSTGRADUATE STUDIES AT WITS

Become globally competitive and locally relevant with a postgraduate qualification from one of Africa's leading universities.

AN INVESTMENT IN YOUR FUTURE

The 21st century is a period of extraordinary change. New information is generated on an unprecedented scale and the world of work is changing rapidly. More careers are becoming multidisciplinary, requiring jobseekers continuously to adapt and learn new skills. Lifelong learning has become imperative.

In this changing job market, postgraduate study can open more doors and enrich your employment prospects, while satisfying your natural intellectual desire.

Not only does a postgraduate degree from Wits provide you with a greater understanding of your chosen field of study, it also equips you with other highly valued professional skills. These include critical thinking, creativity, and collaboration skills, and above all, the ability to be a lifelong learner.

10 REASONS TO BE A WITS POSTGRADUATE STUDENT

1. Wits is renowned for its high-calibre graduates, academic standing, and research capabilities.
2. Wits challenges you to develop original thinking, which is the cornerstone of intellectual growth.
3. Wits University has been ranked among the top 301-350 universities in the world according to the Times Higher World University rankings 2024. It also attained the highest research score among universities in Africa, based on its research output and its reputation for producing research that moves society forward.
4. According to the Shanghai Ranking Consultancy, Wits is among the top 301-400 universities in the world in 15 subject areas – a proud achievement for an institution that celebrated its centenary in 2022.
5. Our focus on producing research with impact ensures that Wits students and staff operate at the leading edge of their disciplines.
6. Wits has mutually beneficial partnerships that promote research and enhance the postgraduate experience.
7. Nearly 40% of our student body is made up of postgraduate students.
8. We provide quality training to postgraduate students, while at the same time enriching the University's undergraduate teaching.
9. We stimulate debate and cultivate open-mindedness, critical thinking, creativity, ethics and a strong sense of social responsibility through teaching activities that promote meaningful learning.
10. According to the latest Global Employability Survey and Ranking, directors and recruiters consider Wits graduates to be some of the most employable in South Africa.

DID
YOU
KNOW?

Wits University was ranked within the top 1.5% of universities worldwide according to the QS World University Rankings (2025).

HONOURS PROGRAMMES

Kick-start your postgraduate career with an Honours degree from Wits

Build your current skills set. Increase your knowledge base. Hone your critical thinking skills. Show prospective employers that you have a higher capacity for independent learning and research.

This is all possible with an Honours degree from Wits.

Isn't an undergraduate degree enough to land me a job?

An undergraduate degree is important for laying the groundwork but a postgraduate qualification takes your knowledge and skills to the next level. With a more in-depth approach to your specialisation, you will gain an entirely new perspective on your industry and, with so many voices vying to be heard in the graduate job market, an Honours degree will help you stand above the rest and be noticed.

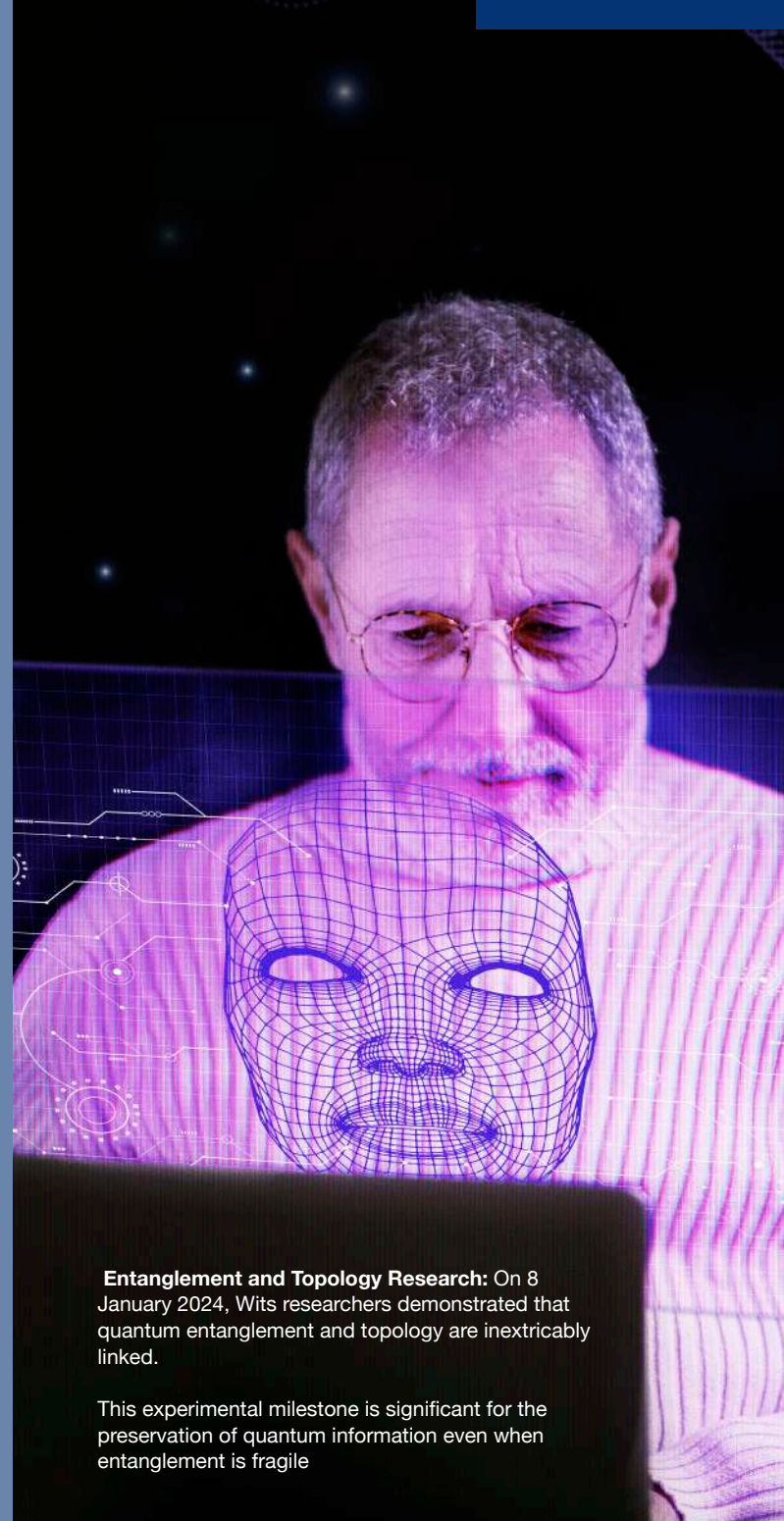
Wits offers a comprehensive choice of Honours programmes across five faculties, intellectually stimulating research areas, and excellent supervision and research support. We also offer funding for meritorious students and those in financial need.

Honours degrees run over a year of full-time study or two years on a part-time basis.

MASTERS AND PHD PROGRAMMES

Different students have different reasons for studying their Masters or PhD. Some do so in the hope that either qualification will improve their career prospects, since many employers view these qualifications as an indication of a person's character and capabilities. Other students enjoy the chance to pursue their undergraduate subject at a more advanced level. Whatever your motivation, Wits remains the perfect institution to give you what you're looking for.

FIND OUT MORE | www.wits.ac.za/postgraduate/



Entanglement and Topology Research: On 8 January 2024, Wits researchers demonstrated that quantum entanglement and topology are inextricably linked.

This experimental milestone is significant for the preservation of quantum information even when entanglement is fragile

POSTGRADUATE AFFAIRS OFFICE

WITS GOLD PROGRAMME

Our Graduate Ownership, Learning, Development (GOLD) Programme incorporates a range of workshops/seminars/writing retreats and major research events that give postgraduate students an opportunity to equip themselves with the skills, knowledge and expertise needed to graduate successfully and to thrive in the workplace.

Research events serve to highlight the cutting edge research and innovations by Wits students, giving students and staff the opportunity to see what other postgrads are doing in other faculties and encourage a blended interdisciplinary approach to research.

New Digital Dome: After major refurbishments, the old Johannesburg Planetarium has been transformed into the state-of-the-art **Wits Anglo American Digital Dome**. This is a place of infinite possibilities and will forever change how South Africans teach, research, and engage with science, technology, business, sport, the humanities and the arts, in a multidisciplinary facility.

The new Wits Anglo American Digital Dome offers a 360° immersive experience for visitors of all ages, with a variety of shows for young and old. It will also serve as a modern teaching venue and a collaborative research space where scientists and students can visualise their work – be it in big data, astrophysics, the digital arts, artificial medicine, microbiology, or precision medicine. The new Digital Dome opened to the public in February 2025.



Visit the website at digitaldome.wits.ac.za

POSTGRADUATE RESOURCES

At Wits, we understand that support and development are key to the success and well-being of our postgraduate students. This is why we offer a variety of services ranging from a Health and Wellness Centre, to a Postgraduate Students' Association that will support your academic and professional development.

Here are some of the services available to our postgraduate students:

POSTGRADUATE RESEARCH AND DEVELOPMENT OFFICE: SUPPORTING POSTGRADUATE RESEARCH. FOR GOOD

The primary function of this Office is to oversee and implement the University's Strategic Plan for Postgraduate Research Training. Aligned to the Wits 2033 strategy, and guided by a broad theory of change (see below), the goal is to 'Develop socially engaged postgraduate thinkers and innovators equipped to use knowledge for change in the country, in Africa, and across the world.' Cognisant of the fact that doing so requires the development of world-class research capacity and a strong and supportive research culture in our postgraduate students, our focus is on:

- Implementing programmes that facilitate interdisciplinarity, innovation, and an inclusive graduate culture
- Modernising information systems to enable evidence-based interventions
- Working with the Development and Fundraising Office (DFO) and Finance Aid and Scholarship Office (FASO) to increase the availability of, and access to, funding opportunities

The Office acts as a cross-faculty, cross-discipline centre for postgraduate researchers that improves the overall quality of the postgraduate experience across all five faculties through:

- Increasing the recruitment pool and success of our postgraduate students
- Encouraging and facilitating the publication of postgraduate research outputs

- Collaborating with Wits Libraries to enhance the visibility of our postgraduate research outputs
- Formulating policy on graduate studies
- Facilitating and hosting annual postgraduate research enrichment events
- Designing and implementing courses and research workshops
- Organising writing retreats
- Promoting postgraduate studies at Wits
- Increasing awareness of postgraduate research on campus



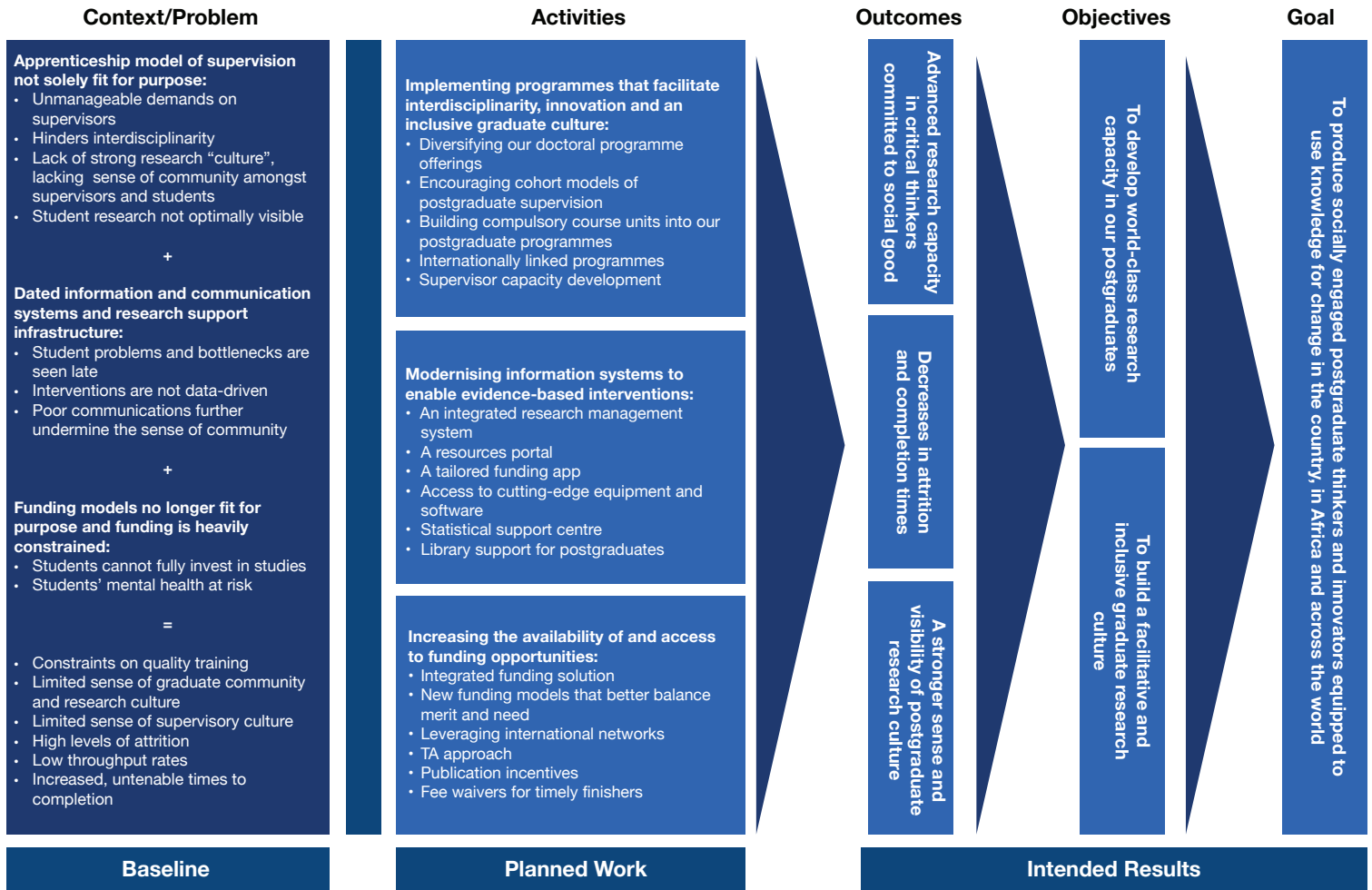
POSTGRADUATE ASSOCIATION (PGA)

The PGA is a student representative body for postgraduate students at Wits. Its mission is to:

- Promote and enhance the interests of postgraduate students
- Interact with the postgraduate student body and University management
- Uphold academic excellence and integrity
- Facilitate the allocation of relevant resources for postgraduate research
- Enhance access of resources to postgraduate students

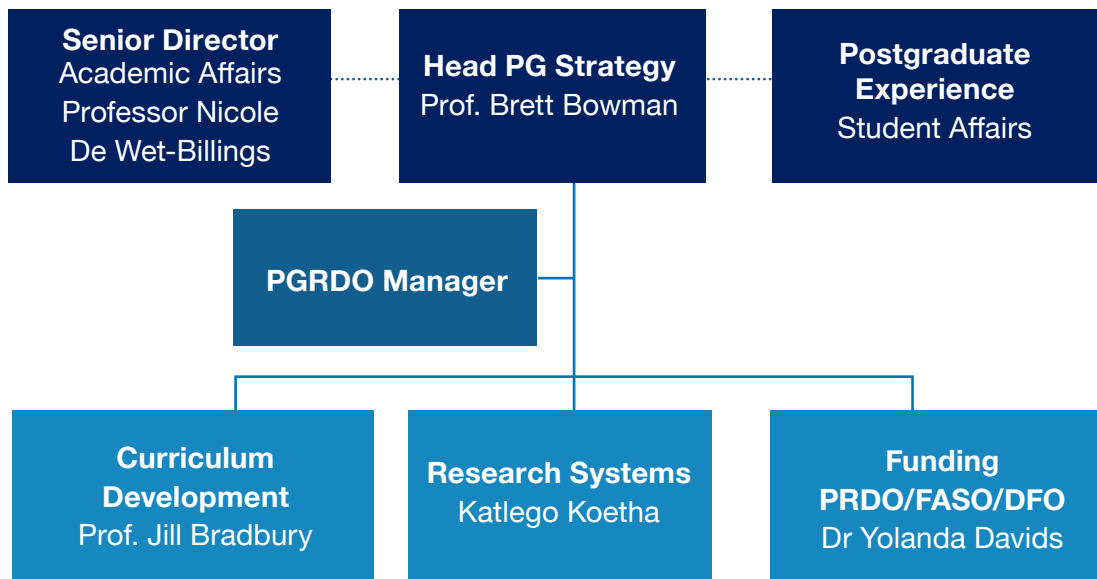


POSTGRADUATE STRATEGY



ORGANISATIONAL STRUCTURE

Postgraduate Research and Development Office (PGRDO)



Discover the Wits Anglo American Digital Dome

Step into the future with Joburg's new Wits Anglo American Digital Dome.

Get ready for a jaw-dropping 360° immersive experience where science, art, technology, and innovation collide. From cosmic journeys to wild migrations, every show will captivate and inspire.

A landmark for learning, exploration, and wonder — don't miss out!

Visit digitaldome.wits.ac.za
for more details.



www.wits.ac.za

RESEARCH SUPPORT

The University Research Office drives a number of initiatives that aim to grow future generations of scholars publishing research with impact.

Interventions include:

- **Mentoring/coaching** - One-on-one discussions with experienced researchers
- **Skills enhancement** - Knowledge sharing
- **Advocacy** - Assisting to remove or reduce (internal) hindrances to research
- **Recognition and exploiting networks** - Linking researchers with appropriate funders

Recently, the scope of the support programme has been enlarged to include a holistic approach to the development of early career academics. Teaching and learning, including postgraduate student supervision, are also supported in a programme run in collaboration with the Centre for Learning and Teaching Development (CLTD).

WITS LIBRARY



The Wits Library consists of two main libraries (Wartenweiler and William Cullen), as well as nine branch libraries where students have access to over one million book volumes, 400,000 journal titles and 46 000 updated electronic resources.

Visit our Library and be awed by the beautiful collections of incunabula, early printed books, and rare manuscripts. Browse through the Africana Collection, which contains exquisitely illustrated volumes on the flora, fauna and exploration of the southern half of the continent of Africa.

And while you are at it, take some time to explore the Historical and Literary Papers department, which is home to material documenting the early days of trade unions, political trials, and apartheid.

STUDENT SERVICES



All registered students at Wits have access to resources including the Campus Health and Wellness Centre, the Disability Rights Unit, and the Counselling and Careers Development Unit. Postgraduate students also have full access to various sports facilities through the Wits Sport associations.



LATEST RESEARCH NEWS FROM WITS

Wits University researchers have recently received several prestigious awards:

National Science and Technology Forum (NSTF)-South32 Research Awards 2023/24: Wits researchers won in six out of 15 categories, including:

Dr Tiisetso E Lepphoto: Kambule-NSTF Award: Emerging Researcher
Associate Professor Claudia Polese: Engineering Research Capacity Development Award

Dr June Fabian: Lifetime Award
Professor Irvy (Igle) Gledhill: Lifetime Award

Professor Jennifer Fitchett: Researcher Award OLICO Mathematics Education: Non-Governmental Association Award

Albert B. Sabin Gold Medal: Presented to Professor Shabir Madhi and Dr Keith Klugman for their significant contributions to vaccine development.

South African Chemical Institute (SACI) Awards 2024: **Professors Kenneth Ozoemena and Maya Makatini** received the Gold Medal and Raikes Medal, respectively, for their outstanding research in chemistry.

National Research Foundation (NRF) Awards 2023: **Professor Jill Adler** received the Lifetime Achievement Award for her contributions to mathematics education.

These accolades highlight Wits University's commitment to excellence in research across various disciplines.

More of our latest news can be found at:
www.wits.ac.za/news/latest-news/research-news

So far, Wits has produced:

4 Nobel Laureates

91 Rhodes Scholars

4

National Planning Commissioners

who helped shape the future of South Africa

32 Mandela Rhodes Scholars

2

Chief Justices of the Constitutional Court

50 Alumni

who have been awarded prestigious National Orders by the Presidency since 1994

A SNAPSHOT OF WITS

Our People

Home to exceptional researchers, academics, professional, administrative and support staff, and students

Wits is home to lauded A-rated scientists, award-winning researchers, and internationally recognised academics.

- Wits established the Distinguished Professors Programme in 2013 to attract high-calibre academics to Faculties. The University has appointed a total of 27 Distinguished Professors to date.
- Wits University continues to lead in academic and research excellence, as demonstrated by the remarkable achievements of its staff. At the 2023/24 National Science and Technology Forum (NSTF)-South32 Research Awards, Wits researchers excelled across multiple categories. Notable winners include Dr Tiisetso E Lephoto, Professor Claudia Polese, and Professor Jennifer Fitchett, highlighting the university's outstanding contributions to science and society.
- More than 200 000 Wits graduates have made and continue to make their mark in the world, including illustrious artists, renowned lawyers, politicians, business leaders, accountants, and highly rated scientists.

Our Campuses

A wealth of sightseeing and educational opportunities

Wits University's campuses, spread across Braamfontein, Parktown, and the Cradle of Humankind World Heritage Site, offer students a wealth of educational and sightseeing experiences that extend far beyond the classroom.

In addition to iconic sites like the Wits Anglo American Digital Dome, Origins Centre, and the Bleloch Geological Museum, Wits continues to enrich the academic and cultural landscape with modern additions. The Fossil Vault, housing rare palaeontological treasures, and the Adler Museum of Medicine continue to captivate students and visitors alike.

More recent developments include:

Wits Innovation Centre: A multidisciplinary hub that encourages collaboration and innovation across various sectors, providing students with a platform to work on real-world challenges. (www.wits.ac.za/innovation/wits-innovation-centre/)

Solar powered benches: These eco-friendly outdoor study spaces, equipped with solar panels, offer students the ability to charge their devices while enjoying the beauty of campus grounds.

Rooftop solar installations:

Supporting sustainability efforts, 14 rooftop solar projects across Wits campuses contribute to the University's goal of reaching net-zero emissions by 2050.

These exciting additions, combined with Wits' rich history of scientific and cultural resources, make the university a dynamic environment for both learning and exploration.

Wits Arts and Culture

Where a vibrant social and cultural life is the norm

Wits University offers a vibrant arts and culture scene, featuring a variety of seminars, art events, exhibitions, and student-run productions. The Wits Theatre Complex is renowned for its experimental works, collaborating with some of the continent's best professional talent. The Wits Art Museum (WAM), located in close proximity to the Nelson Mandela Bridge in Braamfontein, houses over 13,000 African artworks accumulated over seven decades.

WAM regularly hosts educational workshops that are open to the public. Additionally, the Fassler Gallery and the Anthropology Museum offer unique cultural experiences. These offerings

highlight Wits University's commitment to fostering a dynamic and inclusive arts and culture environment.

FIND OUT MORE | www.wits.ac.za/campus-life/

Wits Sport

A proud history of producing top quality sportsmen and sportswomen

Wits is South Africa's only official 'Elite Athlete Friendly' university, with over 28 sports codes. At Wits, we see health, fitness, and physical activity as a way of life. This is why we're known for the prowess and success of our sportsmen and sportswomen, as well as for our vibrant sports culture.

Wits Sport enables students, staff, and alumni to participate in a range of sporting codes, whether high performance, competitive, or recreational. We also offer bursaries to top student athletes who meet the necessary academic requirements.

FIND OUT MORE | www.wits.ac.za/sport/

DID YOU KNOW?

In 2022 we celebrated 100 years of this great institution.

Sport Research at Wits

The Wits Cricket Research Hub for Science, Medicine and Rehabilitation is involved in exciting research, from injury surveillance to three-dimensional technique analysis. The Wits Cricket Research Hub collaborates with local and international researchers on the creation of new and relevant knowledge, while fostering an evidence-based culture amongst coaches, trainers, healthcare providers, players, and other cricket stakeholders. www.wits.ac.za/wcrh/

Wits Sport and Health

Enhancing the peak performance of athletes through sport training programmes and rehabilitation

Wits Sport and Health is aimed at enhancing the lives of athletes by offering sport and exercise medicine programmes to aid in peak performance and rehabilitation through high calibre, internationally recognised training programmes. www.wits.ac.za/wish/

SIGNIFICANT TECH ENHANCEMENTS



The Wits Anglo American Digital Dome, formerly the Johannesburg Planetarium, was officially reopened in November 2024 after significant upgrades. It offers a 360-degree immersive experience, supporting fields like astronomy, AI, and digital arts.



We created an ICT division, eResearch, which caters for big data requirements and provides dedicated support to researchers.



Wits trains more specialists and sub-specialists than any other university in southern Africa. The new R22 million Wits Advanced Surgical Skills Lab will help to enhance the training of surgeons, in a state-of-the-art environment.



The Scilinx Research Laboratory and Studio in the School of Computer Science and Applied Mathematics conducts studies to advance the operational capabilities of organisations in different sectors of the economy.



The DigiMine, a 21st Century state-of-the-art mining lab, uses digital technologies to make mining safer and more sustainable.



The Wits Business School established the first ever Chair in Digital Business in Africa, to help South African businesses thrive in the digital era.

AN IT-SAVVY UNIVERSITY

Wits is committed to researching subjects such as quantum computing, artificial intelligence, and big data, which have the potential to shape future societies and drive innovation in both academia and industry.

At Wits, we understand the impact of digital transformation in Africa and that is why we are building a new AI research entity in partnership with the Cirrus Initiative.

We're working hard to transform Braamfontein into a young, vibrant precinct known for its tech-savvy, innovative community of movers and shakers, and, together with our partners in government, business and industry, Wits launched the Tshimologong Digital Innovation Precinct in Braamfontein.

Africans should be the contributors, shapers, and owners of coming advances in artificial intelligence and machine learning.

- Professor Zeblon Vilakazi

Setswana for 'new beginnings', Tshimologong is Johannesburg's newest high-tech address – home to the incubation of start-ups, the commercialisation of research, and the development of high-level digital skills for students, working professionals and unemployed youth. Artificial Intelligence and Machine Learning technologies are key drivers in the Tshimologong Digital Innovation Precinct. We have a number of highly skilled AI and machine learning researchers at Wits. In fact, we are the only university in Africa regularly to publish at all major international AI, ML, and robotics conferences.

Wits is also making major strides in the field of quantum computing, recently becoming the first African partner on the IBM Q Network. This will enable African researchers to keep up with cutting-edge developments in this field.

DID YOU KNOW?

AI/ML and Data Science are 2 of our 20 areas of Research Excellence

RESEARCH AT WITS

Over the last five years, our research output has increased by 17%, with 72% of research published in international, high impact academic journals.

Wits has a proud history of research excellence dating back to its origins as a School of Mines in 1922. Over the years, research activities have evolved to include the fields of humanities, social sciences, and health sciences.

More recently, we have encouraged a blended, interdisciplinary approach to research at Wits. This puts us in the right place to grapple with various complexities while producing world-class research that transforms and impacts society in multiple beneficial ways.

Research Highlights

- Research productivity exceeded the 2 000 units barrier for the first time against a target of 1 952 units, completing 10 years of year-on-year growth
- **30 South African Research Initiative Chairs**, including 2 new Chairs
- **Below are some examples of the type of high quality, relevant research conducted at Wits in fields like Covid-19, HIV, genetics, quantum computing, energy, migration, diversity, and inequality:**
 - A milestone in the prevention of HIV among women in sub-Saharan Africa, the newly discovered injection to prevent HIV, is more effective than the current HIV pill.
 - The Wits Advanced Drug Delivery Platform research unit discovered that the repurposing of drugs is a cost-efficient approach that eliminates the lengthy time frames of conventional drug development, thus giving patients treatment sooner.

- The Optical Society of America named Wits' research involving fractal light from lasers as the most influential in optics and photonics.
- Climate scientists are developing the first Earth System Model based in Africa which will contribute to the fight against the climate emergency.
- In a major African Genome study, Wits geneticists have discovered more than three million new genetic and susceptibility variants. This study informs African population history, environmental adaptation and susceptibility to disease.
- PeCo Power – a home-grown electrical off-grid solution that will radically change lives and impact local communities.
- Low-cost, long-range, free-space optics that can connect informal settlement communities to high-speed internet.
- Wits Professors developed technology using molecular diagnostics that ensures the efficacy of the equipment that tests for tuberculosis, improving diagnosis and treatment of TB around the world.



263 Total number of SARCHI Research Chairs and Postdoctoral Research Fellows
National Research Foundation (2024)

418 Total number of NRF*- Rated Researchers
**National Research Foundation (2024)*

26 **A** RATED Researchers
(2024)

4 611 Research Publications
(2023)

20 Areas of Research Excellence *(2023)*

6 DSI-NRF Centres of Excellence are hosted, or co-hosted at Wits

LATEST RESEARCH
NEWS FROM WITS

Gabrielle Mudiwa, a 28-year-old writer, has been awarded the inaugural Achmat Dangor Literary Prize 2024, which provides financial support for young, previously disadvantaged writers to pursue an MA in Creative Writing at Wits University. Mudiwa’s exceptional narrative voice and thematic exploration of memory, displacement, and continuity in South Africa set her work apart from nearly 40 applicants. The award ceremony, held at Wits’ William Cullen Library, also featured an exhibition of Dangor’s works. Key speakers, including Ivan Vladislavić, Verne Harris, and Barbara Masekela, highlighted Dangor’s impact on South African literature and cultural activism. Established by Dangor’s wife, Audrey Elster, with support from the Ford and Nelson Mandela Foundations, the prize will be awarded biennially to foster emerging literary voices in South Africa.

Landmark Study Identifies
Prostate Cancer Risk Factors in
African Men

9 October 2024

The largest African genomics study on prostate cancer, led by Wits University, identifies unique genetic risk factors in African men. Published in Nature Genetics, the study highlights earlier, more aggressive cancer onset in African men and underscores the need for targeted screening and treatment strategies. The findings promise advancements in precision medicine and improved cancer outcomes for African populations.

POSTDOCTORAL RESEARCH

If you are a recent PhD graduate, we encourage you to complete your postdoctoral fellowship at Wits. This will greatly assist your professional development and prepare you for a career in academia. Consider it a two-year academic ‘apprenticeship’ or internship.

MEET THREE OF OUR BRIGHT POSTGRAD FELLOWS



Dr Bernice Monchusi (PhD)

Bernice Monchusi is a Postdoctoral Fellow under the mentorship of Professor Mandeep Kaur in the School of Molecular and Cell Biology

Dr Bernice Monchusi received the Postgraduate Student Biotech Fundi award from the Innovation Hub for the Gauteng Region in 2018. She is currently part of a team involved in several projects relating to cancer drug resistance. Her main project focuses on exploring the role of microRNAs in cholesterol-mediated drug resistance, in breast cancer.

The Research Impact

Several projects are currently being run in Professor Kaur’s laboratory to develop new therapeutic approaches to combat drug resistance in cancer. The lab also does anticancer screening on cell lines for several collaborators within South Africa and India.



Dr Iniyar Natarajan (PhD)

Iniyar Natarajan is a Postdoctoral Fellow under the mentorship of Professor Roger Deane in the School of Physics

Dr Iniyar Natarajan, a postdoctoral researcher currently working with Roger Deane, a Professor of radio astronomy at Wits, was part of the team that simulated the black hole polarisation images of the M87 galaxy, as well as the team that helped generate the final image that was released.

The Research Impact

Scientists aim to create a 3D map of the black hole’s surroundings, and hope better to understand black hole coronas and explore how the corona of a black hole is capable of producing bright X-ray flares.

“

Wits offers a large number of Postdoctoral Fellowships annually and our goal is to grow the number of Postdoctoral Fellows to more than 200.”



Geraud Nangue Tasse (PhD)

Computer science student Geraud Tasse was awarded the IBM PhD Fellowship Award in 2021 for his work on composition in reinforcement learning (RL). He is one of 16 students worldwide to receive the award.

Tasse completed his composition work in boolean task algebra. Boolean algebra has been fundamental in the development of digital electronics and is present in all modern programming languages.

The Research Impact

The outcome of the process is building a smart machine that constitutes a software system capable of accomplishing tasks that commonly require human intelligence. Such machines can be robots or computer systems.



LATEST RESEARCH NEWS FROM WITS

5th African Philanthropy Conference Explores New Frontiers in Social Impact

13 August 2024

The 5th African Philanthropy Conference, held in Victoria Falls, Zimbabwe, drew 320 participants from 43 countries to discuss emerging trends in African philanthropy. Highlights included keynote speeches, community project visits, and a Lifetime Achievement Award presented to Tade Aina. Hosted by Wits Business School's CAPSI, the next conference is set for Cairo's pyramids in 2025, focusing on impactful change.

Colloquium Examines Ethical Challenges of AI and Big Data in Research

8 August 2024

The 4th Wits SARIMA Carnegie Global Ethics Day colloquium explored AI and Big Data's ethical challenges in research, highlighting concerns about bias, transparency, and academic integrity. Experts discussed the technology's benefits and risks, emphasising the need for ethical guidelines, oversight, and inclusion of diverse populations in research. The event underscored the balance between innovation and responsibility in AI's academic applications.

Wits researchers pioneer a new way of searching for Dark Matter 27 November 2023 - Wits University

Researchers explore whether Dark Matter particles actually are produced inside a jet of standard model particles. The existence of Dark Matter is a long-standing puzzle in our universe. Dark Matter makes up about a quarter of our Universe, yet it does not interact significantly with ordinary matter. The existence of Dark Matter has been confirmed by a series of astrophysical and cosmological observations, including in the stunning recent pictures from the James Webb Space Telescope. However, to date, no experimental observation of Dark Matter has been reported. The existence of Dark Matter has been a question that high energy and astrophysicists around the world have been investigating for decades.

Research Impact

“This is the reason we do research in basic science, probing the deepest mysteries of the Universe. The Large Hadron Collider at CERN is the largest experiment ever built, and particle collisions creating big-bang like conditions can be exploited to look for hints of Dark Matter,” says Professor Deepak Kar, from the School of Physics at the University of the Witwatersrand in Johannesburg, South Africa.

Working at the ATLAS experiment at CERN, Kar and his former PhD student, Sukanya Sinha (now a postdoctoral researcher at the University of Manchester), has pioneered a new way of searching for Dark Matter. Their research has been published in the journal, *Physics Letters B*.

“There have been a plethora of collider searches for Dark Matter over the past few decades so far which have focused on weakly interacting massive particles, termed WIMPs,” says Kar. “WIMPs is one class of particles that are hypothesised to explain Dark Matter as they do not absorb or emit light and don’t interact strongly with other particles. However, as no evidence of WIMPs has been found so far, we realised that the search for Dark Matter needed a paradigm shift.”

“What we were wondering, was whether Dark Matter particles actually are produced inside a jet of standard model particles,” said Kar. This led to the exploration of a new detector signature known as semi-visible jets, which scientists never looked at before.

High energy collisions of protons often result in the production of collimated spray of particles, collected in what is termed as jets, from decay of ordinary quarks or gluons. Semi-visible jets would arise when hypothetical dark quarks decay partially to Standard-Model quarks (known particles) and partially to stable dark hadrons (the “invisible fraction”). Since they are produced in pairs, typically along with additional Standard-Model jets, the imbalance of energy or the missing energy in the detector arises when all the jets are not fully balanced. The direction of the missing energy is often aligned with one of the semi-visible jets.

www.wits.ac.za/future/stories/2024/wits-researchers-pioneer-a-new-way-of-searching-for-dark-matter.html

This makes searches for semi-visible jets very challenging, as this event signature can also arise due to mis-measured jets in the detector. Kar and Sinha's new way of looking for Dark Matter opens up new directions into looking for the existence of Dark Matter.

"Even though my PhD thesis does not contain a discovery of Dark Matter, it sets the first and rather stringent upper bounds on this production mode, and is already inspiring further studies," says Sinha.

The ATLAS Collaboration at CERN has highlighted this as one of the flagship results to come out at summer conferences in a press briefing: <https://atlas.cern/Updates/Briefing/Semi-Visible-Jets>. a practical way," says Bhattacharyya.



Professor Deepak Kar, from the School of Physics, with his former PhD student, Sukanya Sinha, now a postdoctoral researcher at the University of Manchester.



FACULTY OF COMMERCE, LAW AND MANAGEMENT

FACULTY OF COMMERCE, LAW AND MANAGEMENT

Research pursued by the Faculty of Commerce, Law and Management impacts on how South Africa does business and how it practises law and economics. We influence public policy, help to build the public sector, and think deeply about economic and social challenges with strategic thinkers in industry, commerce, and society.

Our research is also applied to our own curriculum, keeping you relevant and current in a fast-moving profession. These are some of the exciting research opportunities available to you:

The **Centre for Learning on Evaluation and Results (CLEAR)** builds the capacity of people and institutions to plan, measure, and report on the project – a process referred to as Monitoring and Evaluation (M&E). CLEAR-AA's work in supporting and improving M&E contributes to better governance and improved development outcomes across the continent.

The **Southern Centre for Inequality Studies** focuses on understanding the inequality of the global south.

South African and African researchers come together under the **African Microeconomic Research Umbrella** to research African microeconomic issues related to firms and labour markets.

The **Institutions and Political Economy Group** (IPEG) studies the relationships

between institutions, organisations, and markets, and how they impact on long-term economic performance.

The **Strategic Foresight Research Group** combines the fields of accounting and management science in strategic projects that study risk and crisis management, education, tax and accounting systems, social responsibility, and business sustainability.

The **Centre for Applied Legal Studies** researches broader political and legal struggles for social justice. Projects include socioeconomic rights related to housing and basic services, the right to education, gender-based research, and labour law.

The Faculty consults with academics, researchers, top students, and leaders in the public and private sectors on its teaching, learning, and research offerings.

Choose from a range of postgraduate degrees and diplomas, on a full- or part-time basis, and by coursework or through research-based programmes.



The **African Centre for Conflict Management (ACCM) Research Centre**, a partnership between the Wits School of Governance (WSG) and the Thabo Mbeki Foundation (TMF), is dedicated to research on issues of conflict, peace building and post-conflict reconstruction and development in Africa. The TMF and ACCM aim to set the agenda for progressive change throughout the continent and to create platforms for dialogue producing a continental movement driven by a new cadre of thought leaders.

Schools and Research Entities

- Wits Margo Steele School of Accountancy
- School of Business Sciences
- School of Economics and Finance
 - African Microeconomic Research Umbrella (AMERU)
 - Institutions and Political Economy Group (IPEG)
 - Strategic Foresight Research Group (SFRG)
- School of Law
 - Centre for Applied Legal Studies (CALS)
 - Mandela Institute
 - NRF SARCHI Chair on Equality, Law and Social Justice
- Wits School of Governance
 - Centre for Defence and Security Management
- Graduate School of Business Administration – Wits Business School (WBS)
 - African Energy Leadership Centre
 - BCX Chair in Digital Business
 - African Centre on Philanthropy and Social Investment
 - CLEAR
 - SCIS

COMMERCE, LAW AND MANAGEMENT PROGRAMMES ON OFFER		Year/s	Full-time/ Part-time
Wits Margo Steele School of Accountancy			
Postgraduate Diploma in Accountancy	1	FT	
Postgraduate Diploma in Accountancy (Distance/online mode)	1	FT	
Postgraduate Diploma in Specialised Accountancy	2	PT	
Postgraduate Diploma in Specialised Accountancy, in the field of Integrated Thinking and Value Creation	1	FT	
Postgraduate Diploma in Law, in the fields of:			
• General	1	FT	
	2	PT	
• Commercial and Business Law	1	FT	
	2	PT	
• Corporate Law	1	FT	
	2	PT	
• Environmental Law	1	FT	
	2	PT	
• Human Rights Advocacy and Litigation	1	FT	
	2	PT	
• Information and Communications Law	1	FT	
	2	PT	
• International Law	1	FT	
	2	PT	
• International Economic Law	1	FT	
	2	PT	
• Labour Law	1	FT	
	2	PT	
• Pension Fund Law	2	PT	
• Labour Dispute Resolution Practice	1	FT	
	2	PT	

COMMERCE, LAW AND MANAGEMENT PROGRAMMES ON OFFER		Year/s	Full-time/ Part-time
Bachelor of Accounting Science Honours		1	FT
Bachelor of Economic Science Honours	1	FT	
	2	PT	
Bachelor of Commerce Honours, in the fields of:			
• Business Sciences (Finance)	1	FT	
	2	PT	
• Business Sciences (Human Resources)	1	FT	
	2	PT	
• Business Sciences (Insurance)	1	FT	
	2	PT	
• Business Sciences (Management)	1	FT	
	2	PT	
• Business Sciences (Marketing)	1	FT	
	2	PT	
• Economics	1	FT	
	2	PT	
• Applied Development Economics	1	FT	
	2	PT	
• Information Systems	1	FT	
	2	PT	



COMMERCE, LAW AND MANAGEMENT PROGRAMMES ON OFFER	Year/s	Full-time/ Part-time
Master of Commerce (Research)	1	FT
	2	PT
Master of Commerce (Coursework and Research Report), in the fields of:		
• Accounting	1	FT
	2	PT
• Financial and Integrated Reporting	1	FT
	2	PT
• Finance	1	FT
	2	PT
• Economics	1	FT
	2	PT
• Applied Development Economics	1	FT
	2	PT
• Information Systems	1	FT
	2	PT
• Inequality Studies	1	FT
	2	PT
• Environmental and Energy Economics	1	FT
	2	PT
Master of Laws (Research)	1	FT
	2	PT
• General	1	FT
	2	PT
• Commercial and Business Law	1	FT
	2	PT
• Corporate Law	1	FT
	2	PT
Master of Laws (Coursework and Research Report), in the fields of:		
• Environmental Law	1	FT
	2	PT

COMMERCE, LAW AND MANAGEMENT PROGRAMMES ON OFFER	Year/s	Full-time/ Part-time
Master of Laws (Coursework and Research Report), in the fields of: (continued)		
• Human Rights Advocacy and Litigation	1	FT
	2	PT
• Information and Communications Law	1	FT
	2	PT
• International Law	1	FT
	2	PT
• International Economic Law	1	FT
	2	PT
• Labour Law	1	FT
	2	PT
• Pensions Fund Law	2	PT
• Tax Law	2	PT
• Labour Dispute Resolution Practice	1	FT
	2	PT
Doctor of Philosophy (PhD), in the fields of:		
• Accountancy	2	FT
	4	PT
• Management	2	FT
	4	PT
• Law	2	FT
	4	PT
• Business Sciences	2	FT
	4	PT
• Economics	2	FT
	4	PT
• Finance	2	FT
	4	PT
• Information Systems	2	FT
	4	PT
• Governance	2	FT
	4	PT

COMMERCE, LAW AND MANAGEMENT PROGRAMMES ON OFFER	Year/s	Month/s	Full-time/ Part-time
Wits Business School			
Postgraduate Diploma in Business Administration FT and PT (Distance/Online mode)			
• Business Administration (Distance/Online mode)	2		PT
• Business Administration	1		FT
Postgraduate Diploma in Management, in the fields of:			
• Business Administration	1		FT
• Digital Business	1		FT
• Energy Leadership	1		FT
• Energy Leadership (Electricity Stream)	1		FT
• Healthcare Leadership	1		FT
• Philanthropy and Resource Mobilisation	1		FT
Master of Business Administration (Coursework and Research Report)	2		PT
Master of Management in Entrepreneurship and New Venture Creation (Coursework and Research Report)	2		PT
Master of Management in Finance and Investment	1		FT
Master of Management in African Philanthropy	2		PT
MBA in Healthcare Leadership	2		PT

COMMERCE, LAW AND MANAGEMENT PROGRAMMES ON OFFER	Year/s	Month/s	Full-time/ Part-time
Wits Business School			
Master of Management (Coursework and Research Report), in the fields of:			
• Digital Business	2		PT
• Energy Leadership	2		PT
Master of Management (Research)	2		PT
Master of Management (Research)	1		FT
Wits School of Governance			
Postgraduate Diploma in Management, in the fields of:			
• Public Development and Management	1		FT
• Public and Development Sector Monitoring and Evaluation	1		FT
• Security	1		FT
• Governance and Public Leadership	1		FT
Postgraduate Diploma in Public Management (Distance/online mode), in the fields of:			
• Policy Management		18	FT
• Monitoring and Evaluation		18	FT

Postgraduate Enquiries in the Faculty of Commerce, Law and Management

Braamfontein Campus West

Ms Sibongile Dhladhla **T** 011 717 8005 | **E** Sibongile.Dhladhla@wits.ac.za
 Ms Susie Maluleke **T** 011 717 8173 | **E** Susie.Maluleke@wits.ac.za
 Mr Tshepo Mohlakoane **T** 011 717 8390 | **E** Tshepo.Mohlakoane@wits.ac.za

Wits Business School

Ms Jennifer Mgolodela **T** 011 717 3038 | **E** Jennifer.Mgolodela@wits.ac.za
 Wits Business School General | **E** admissions.wbs@wits.ac.za

Wits School of Governance

Ms Mbali Nxumalo **T** 011 717 3565 | **E** Mbali.Nxumalo@wits.ac.za

 www.wits.ac.za/postgraduate/academic-programmes/faculty-of-commerce-law-and-management/





FACULTY OF ENGINEERING AND THE BUILT ENVIRONMENT

Access these internationally recognised research centres:

- The National Aerospace Centre
- The Centre for Urbanised and Built Environment Studies
- Responsible Mining Laboratory
- The Joburg Centre for Software Engineering
- The Transnet Centre for Systems Engineering

The Faculty is also home to the Wits Mining Institute.
www.wits.ac.za/wmi/

Four of the South African Research Chairs (SARChI) in Engineering are at Wits, and are recognised for excellence in research:

- Chair in Development Planning and Modelling
- Chair in Sustainable Process Engineering
- Chair in Hydrometallurgy: Innovation and Sustainability
- Chair in Clean Coal Technology

DID
YOU
KNOW?

FACULTY OF ENGINEERING AND THE BUILT ENVIRONMENT

The Faculty of Engineering and the Built Environment works with the public and private sectors to tackle national problems such as energy generation, deep-level mining, mining safety, water purification systems, transport, and urban development.

The Faculty has the highest number of endowed professorships or chairs at Wits and strong relationships with industry. It often conducts contract research for local and international companies aimed at addressing South Africa's social, spatial, and infrastructural needs.

You will start your research project at Honours level and can progress to Masters and PhD level. The relevant professional body accredits all of our programmes and the Engineering Council of South Africa accredits all engineering programmes.

ENGINEERING

With high-calibre academic and support staff and purpose-built laboratories, computing, and library facilities, you have everything you need to build your skills in specialist areas.

Choose between various Postgraduate Diplomas, Honours, Masters and Doctoral degrees.

Science graduates can also study engineering at a postgraduate level, to prepare themselves for leadership roles in technology and related fields.

BUILT ENVIRONMENT

The School of Architecture and Planning and the School of Construction Economics and Management are known for researching creative responses to societal challenges. These include climate change, sustainability when designing cities and buildings, the delivery of affordable housing and the creation of more inclusive cities.

Examine, develop and test proposals to shape inner cities in live city studios, or dig deeper into everything from declining towns and informal settlements to street traders and provincial and metropolitan policies.


The Digital Mining Incubator will serve as a hub that enables the development of South Africa's next generation of digital mining experts.

ENGINEERING AND THE BUILT ENVIRONMENT PROGRAMMES ON OFFER

Master of Science in Engineering	Master of Science in Engineering	Master of Engineering (Professional)	Doctor of Philosophy (Engineering)	Postgraduate Diploma in Engineering
by coursework and research	by dissertation	by coursework only, in the fields of:	in the fields of:	in the fields of:
1 year full-time, or 2 years part-time	1 year full-time, or 2 years part-time	1 year full-time, or 2 years part-time	2 years full-time, or 4 years part-time	1 year full-time, or 2 years part-time
• Chemical Engineering	• Chemical Engineering		• Chemical Engineering	• Chemical Engineering
• Civil Engineering	• Civil Engineering	• Civil Engineering	• Civil Engineering	
• Artificial Intelligence Engineering	• Electrical Engineering	• Electrical Engineering	• Electrical Engineering	• Electrical Engineering
• Mechanical Engineering	• Mechanical Engineering	• Mechanical Engineering	• Mechanical Engineering	• Mechanical Engineering
• Industrial Engineering	• Industrial Engineering	• Industrial Engineering	• Industrial Engineering	• Industrial Engineering
• Aeronautical Engineering	• Aeronautical Engineering	• Aeronautical Engineering	• Aeronautical Engineering	
• Metallurgy and Materials Engineering	• Metallurgy and Materials Engineering	• Metallurgy and Materials Engineering	• Metallurgy and Materials Engineering	• Metallurgy and Materials Engineering
• Mining Engineering	• Mining Engineering		• Mining Engineering	
• Engineering Management	• Engineering Management	• Engineering Management	• Engineering Management	• Engineering Management
• Systems Engineering	• Systems Engineering	• Systems Engineering	• Systems Engineering	
	• Artificial Intelligence Engineering			

ENGINEERING AND THE BUILT ENVIRONMENT PROGRAMMES ON OFFER

Master of Urban Design				Bachelor of Science Honours in Quantity Surveying	
Master of Science in Development Planning				Bachelor of Architectural Studies with Honours	Postgraduate Diploma in Construction Management
Master of Architecture (Professional)	Master of Science in Building	Master of Urban Studies	Doctor of Philosophy	Bachelor of Science with Honours in Construction Management	Bachelor of Science with Honours in Urban and Regional Planning
				Bachelor of Science Honours in Property Studies	
by coursework and research	in the fields of:	in the fields of:	in the fields of:		
1 year full-time, or 2 years part-time	1 year full-time, or 2 years part-time	1 year full-time, or 2 years part-time	2 year full-time, or 4 years part-time	1 year full-time	1 year full-time, or 2 years part-time
	<ul style="list-style-type: none"> • Project Management 	<ul style="list-style-type: none"> • Housing and Human Settlements 	<ul style="list-style-type: none"> • Architecture 		
	<ul style="list-style-type: none"> • Property Development and Management 	<ul style="list-style-type: none"> • Sustainable Energy 	<ul style="list-style-type: none"> • Building 		
	<ul style="list-style-type: none"> • Development Planning 	<ul style="list-style-type: none"> • Efficient Cities 	<ul style="list-style-type: none"> • Real Estate 		
		<ul style="list-style-type: none"> • Urban Management 	<ul style="list-style-type: none"> • Town and Regional Planning 		
		<ul style="list-style-type: none"> • Urban Politics and Governance 	<ul style="list-style-type: none"> • Construction Management 		
		<ul style="list-style-type: none"> • Urban Research 	<ul style="list-style-type: none"> • Construction Project Management 		
			<ul style="list-style-type: none"> • Quantity Surveying 		

 +27 (0) 11 717 7007

 tshegofatso.chauke@wits.ac.za

 www.wits.ac.za/postgraduate/academic-programmes/faculty-of-engineering-and-the-built-environment



FACULTY OF HEALTH SCIENCES

The Faculty of Health
Sciences is home to:

2

Department of Science
and Innovation National
Research Foundation
Centres of Excellence

7

Department of Science
and Innovation/National
Research Foundation
South African Research
Chairs

2

African Network for
Drug and Diagnostics
Innovation Centres (ANDI)

21 Research
Entities

2 Research
Thrusts

*(Diseases of Lifestyle and
Molecular Biosciences)*

FACULTY OF HEALTH SCIENCES



The Wits Faculty of Health Sciences pioneers African and global research that improves and saves lives.

HIV/Aids, tuberculosis and malaria, diabetes, hypertension and heart disease are some of the serious health issues affecting South African communities. As a postgraduate student of the Faculty of Health Sciences, you can help to develop new treatments and vaccines in these areas, as well as in oral health sciences, therapeutic sciences and drug delivery.

Our Faculty is the largest of its kind on the continent and we have trained more specialists and sub-specialists than any other university in southern Africa. The quality of our research output is among the best in the country and is respected internationally. It has influenced national policy, informed our clinical work and

enabled us to produce well-rounded healthcare professionals. Our postgraduate supervisors are seasoned researchers in clinical, applied and basic sciences and can guide you through your research project. Furthermore, our extensive clinical training programme gives you access to experts at institutions such as the Wits Donald Gordon Medical Centre.

Choose from a selection of courses on research methodology, scientific writing skills and biostatistics, and join a thriving research community by attending monthly informative talks, the biennial Research Day, and the Postgraduate Expo.

Choose from a wide range of postgraduate degrees and diplomas offered through our seven Schools:

- Anatomical Sciences
- Clinical Medicine
- Oral Health Sciences
- Pathology
- Physiology
- Public Health
- Therapeutic Sciences

HEALTH SCIENCES PROGRAMMES ON OFFER	YEARS	
	full-time	part-time
Bachelor of Clinical Medical Practice with Honours, in the field of Emergency Medicine		2
Bachelor of Health Sciences with Honours, in the fields of: <ul style="list-style-type: none"> Anatomical Pathology Bioethics and Health Law Biokinetics Chemical Pathology Clinical Microbiology and Infectious Diseases Exercise Science Forensic Sciences Human Biology Human Genetics Medical Cell Biology Molecular Medicine Neuroscience Pharmacology (Biosciences track) Pharmacology (Health Sciences track) Physiology 	1	2
Bachelor of Health Sciences with Honours, in Public Health	1	2
Master of Science in Dentistry by coursework and research report, in the fields of: <ul style="list-style-type: none"> Aesthetic Dentistry Community Dentistry Cranio-Mandibular Dysfunction Implantology Endodontics Prosthodontics Maxillo-Facial Radiology Oral Pathology Oral Medicine Maxillo-Facial Oral Surgery Periodontics Digital Dentistry Orthodontics 	1	2
Master of Science in Medicine by coursework and research report, in the fields of: <ul style="list-style-type: none"> Bioethics and Health Law Child Health Comm Paediatrics Neurodevelopment Genetic Counselling Pharmaceutical Affairs Clinical Pharmacy Biokinetics Surgery Sports Medicine Emergency Medicine Exposure Science 	1	2
Master of Science in Occupational Therapy by coursework and research report, in the fields of: <ul style="list-style-type: none"> Neurological Disorders Perceptual Disorders Psychiatric Disorders 	1	2

HEALTH SCIENCES PROGRAMMES ON OFFER	YEARS	
	full-time	part-time
Master of Science in Physiotherapy by coursework, in the fields of: <ul style="list-style-type: none"> Orthopaedic Surgery for Physiotherapists Respirology, Cardiology and Cardiothoracic Surgery for Physiotherapists Community Physiotherapy Traumatology Neurology and Neurosurgery for Physiotherapists Sport and Exercise Physiotherapy Paediatrics for Physiotherapists (General or Neurology) Neuromusculoskeletal Physiotherapy Physiotherapeutic Musculoskeletal Pain Management 	1	2
Master of Science in Nursing, in the fields of: <ul style="list-style-type: none"> Child Nursing Infection Control Intensive Care Nursing Nephrology Nursing Nursing Education Occupational Health Nursing Oncology and Palliative Care Trauma and Emergency Nursing 	1	2
Master of Science in Epidemiology by coursework and research report, in the fields of: <ul style="list-style-type: none"> Field Epidemiology Epidemiology and Biostatistics Implementation Science Public Health Informatics Infectious Disease Epidemiology Biostatistics 	18m	3
Master of Science in Epidemiology by dissertation	1	2
Master of Public Health, in the fields of: <ul style="list-style-type: none"> Exposure and Health Maternal and Child Health Rural Health Health Systems and Policy Health Economics Social and Behaviour Change Communication 	2	4

HEALTH SCIENCES PROGRAMMES ON OFFER	YEARS	
	full-time	part-time
Masters in Health Science Education	1	2
Master of Medicine, in the specialty of: <ul style="list-style-type: none"> Anaesthesia Anatomical Pathology Cardiothoracic Surgery Chemical Pathology Clinical Pathology Dermatology Diagnostic Radiology Emergency Medicine Exposure Science Family Medicine Forensic Pathology Hematology Internal Medicine Medical Genetics Microbiology Neurosurgery Neurology Nuclear Medicine Obstetrics and Gynaecology Occupational Medicine Ophthalmology Orthopaedic Surgery Otorhinolaryngology Paediatric Surgery Paediatrics Plastic and Reconstructive Surgery Psychiatry Public Health Medicine Radiation Oncology Surgery Urology Virology 	3/4/5/ years full-time depending on specialty	
Master of Science in Medicine by dissertation, in the fields of: <ul style="list-style-type: none"> Anaesthetics Anatomical Pathology Anatomical Sciences Biokinetics Bioethics and Health Law Chemical Pathology Clinical Microbiology and Infectious Diseases Community Health Critical Care Diagnostic Radiology Exposure Science Emergency Medicine Family Medicine Forensic Medicine Haem- and Molecular Medicine Immunology Material Science Nursing Obstetrics and Gynaecology Nuclear Medicine Neuro Surgery Occupational Therapy Oral Pathology Ophthalmology Oral Biology Orthopaedic Surgery Pharmacy Paediatrics Paediatric Cardiology Paediatric Radiology Pharmacology Physiology Psychiatry Virology 	3/4/5/ years full-time depending on specialty	

HEALTH SCIENCES PROGRAMMES ON OFFER	YEARS	
	full-time	part-time
Master of Science in Medicine by dissertation, in the fields of: <ul style="list-style-type: none"> Health Science Education Human Genetics Immunology Internal Medicine Microbiology Physiotherapy Radiation Oncology Rural Health Surgery Virology Exposure Science 	1	2
Master of Dentistry, in the fields of: <ul style="list-style-type: none"> Community Dentistry Prosthodontics Maxillo Facial Radiology Oral Pathology Oral Medicine Maxillo Facial and Oral Surgery Orthodontics Periodontics 	3/4	
Master of Science in Physiotherapy by dissertation	1	2
Master of Science in Occupational Therapy by dissertation	1	2
Master of Science in Nursing by dissertation	1	2
Master of Pharmacy by dissertation	1	2
Doctor of Philosophy, in the fields of: <ul style="list-style-type: none"> Anaesthesia Anatomical Pathology Anatomical Sciences Chemical Pathology Clinical, Micro and Infectious Diseases Community Dentistry Conservative Dentistry Diagnostic Radiology Experimental Odontology Family Medicine Forensic Medicine Hematology Immunology Paediatrics Pharmacology Pharmacy Physiology Physiotherapy Prosthodontics Psychiatry Public Health Radiation Oncology Therapeutic Sciences Surgery Virology 	2	4

HEALTH SCIENCES PROGRAMMES ON OFFER	YEARS	
	full-time	part-time
Doctor of Philosophy, in the fields of (continued): <ul style="list-style-type: none"> Bioethics and Health Law Biomedical Informatics and Translational Medicine Critical Care Hematology and Molecular Medicine Health Sciences Education Human Genetics Immunology Internal Medicine Obstetrics and Gynaecology Occupational Therapy Oral Pathology Oral Biology Ophthalmology Oral Medicine and Periodontology Orthodontics Orthopaedic Surgery Material Science Microbiology Biokinetics Neurosurgery Nuclear Medicine Nursing 	2	4
Postgraduate Diploma in Public Health, in the fields of: <ul style="list-style-type: none"> Exposure and Health Maternal and Child Health Health Systems and Policy Social and Behavioural Change Communication Rural Health 	1	2
Postgraduate Diploma in Child Health, in the fields of: <ul style="list-style-type: none"> Community Paediatrics Neurodevelopment 	1	2
Postgraduate Diploma in Occupational Health		2
Postgraduate Diploma in Tropical Medicine and Hygiene	1	
Postgraduate Diploma in Occupational Therapy, in the fields of: <ul style="list-style-type: none"> Neurological Disorders Perceptual Disorders Psychiatric Disorders 		2
Postgraduate Diploma in Physiotherapy <ul style="list-style-type: none"> Sport and Exercise Physiotherapy Neuromusculoskeletal Physiotherapy (NMS) 	1	
Postgraduate Diploma in Health Sciences Education	1	2



+27 (0)11 717 2075/6

anna.muronga@wits.ac.za
modie.maumela@wits.ac.za
palesa.khumalo@wits.ac.za

www.wits.ac.za/postgraduate/academic-programmes/faculty-of-health-sciences/





FACULTY OF HUMANITIES

FACULTY OF HUMANITIES

The Faculty of Humanities links the arts, social and natural sciences, law, and management to allow to engage creatively and critically in your chosen field.

Learn from leading academics and collaborate on research with scholars in Africa, Asia, Europe, North America and the Middle East.

Explore Johannesburg's dynamic political, social, economic and cultural links to Africa and the world, and become part of a diverse, stimulating community of multicultural, multidisciplinary researchers.

Choose from vocationally oriented programmes that prepare you with the theoretical and practical knowledge and skills to pursue a specific career, or strengthen your research and analytical skills to unlock a range of career opportunities.

RESEARCH INSTITUTES AND UNITS

Our thriving research entities add to our vibrant culture and have a significant impact on our research into issues confronting South Africa and the world.

Centres of Excellence:

- The African Centre for Migration and Society
- The Wits Centre for Diversity Studies
- The Wits Centre for Ethics (WiCE)
- The Centre for Deaf Studies
- The Centre for Researching Education and Labour Centre
- Emthonjeni Centre (Multi-disciplinary Community Service and Development Centre)
- The Learning, Information, Networking, Knowledge Centre
- The Marang Centre for Maths and Science Education

Research Entities:

- The Health Communication Research Unit
- The Society, Work and Development Institute
- The Wits Institute for Social and Economic Research

Cross-Faculty Entities:

- The African Centre for the Study of the United States
- The Global Change Institute

EQUALITY STUDIES IN THE GLOBAL SOUTH

Inequality is a major influencing factor in South Africa and indeed in the Global South. The study of this problem using a multidisciplinary approach is an ongoing area of research excellence at Wits.



www.wits.ac.za/scis

HUMANITIES PROGRAMMES ON OFFER	YEARS	
	full-time	part-time
Doctor of Philosophy	2	4
Master of Arts by Coursework and Research Report	1	2
Master of Arts in Audiology by coursework and research report	1	2
Master of Arts in Clinical Psychology	3	
Master of Arts in Community-based Counselling Psychology by Coursework and Research Report	2	
Master of Arts in Interpreting by Coursework and Research Report	1	2
Master of Arts in Heritage by Coursework and Research Report	1	2
Master of Arts in Occupational Social Work by Coursework and Research Report	1	2
Master of Arts in ICT Policy and Regulation	1	2
Master of Arts by dissertation	1	2
Master of Arts in Audiology by dissertation	1	2
Master of Arts in Social Work by dissertation	1	2
Master of Arts in Applied Drama and Theatre by dissertation	1	2
Master of Arts in Speech Pathology by dissertation	1	2
Master of Arts in Translation by dissertation		
Master of Arts in Dramatic Art by dissertation	2	3
Master of Music is by Creative Work and Dissertation	2	1
Master of Arts in Dramatic Art by Creative work and Dissertation		2
Master of Arts in Social Work by Coursework and Report		2
Master of Arts in Applied Performance by dissertation	1	2
Master of Arts in Arts Therapies by dissertation	1	2
Master of Arts in Fine Arts by dissertation	1	
Master of Arts in Heritage by dissertation	1	2
Master of Music by dissertation	1	2
Master of Education in Educational Psychology by Coursework and Research Report	2	
Bachelor of Arts Honours	1	2
Bachelor of Arts Joint Honours	1	2

HUMANITIES PROGRAMMES ON OFFER	YEARS	
	full-time	part-time
Bachelor of Arts Honours in the field of Psychology (part-time)	1	2
Postgraduate Diploma in Arts	1	2
Postgraduate Diploma in Translation and Interpreting	1	2
Postgraduate Diploma in Dance in Education, Communities and Social contexts	1	2
EDUCATION		
Doctor of Philosophy	2	4
Master of Education by Coursework and Research Report	1	2
Master of Education by dissertation	1	2
Bachelor of Education with Honours	1	2
Postgraduate Diploma in Education in the field of Higher Education	1	2
Postgraduate Diploma in Education in the field of Digital Education and Online Teaching	1	2
Postgraduate Certificate in Education in the field of South African Sign Languages	1	2



HUMANITIES PROGRAMMES	YEARS	
	full-time	part-time
Honours in the specialisation/fields of studies:		
African Languages and Linguistics	1	2
African Literature	1	2
Applied Drama: Theatre in Education, Communities and Social Context	1	2
Archaeology	1	2
Cultural Policy and Management	1	2
Anthropology	1	2
Creative Writing	1	2
Demography and Population Studies	1	2
Development Studies	1	2
Digital Art	1	2
Critical Diversity Studies	1	2
English	1	2
Transnational Literary and Cultural Studies	1	2
Fine Art	1	2
Film and Television	1	2
French and Francophone Studies	1	2
Geography	1	2
German Language and Literature	1	2
Heritage Studies	1	2
History	1	2
History of Art	1	2
Interdisciplinary Arts and Culture Studies	1	2
International Relations	1	2
Interpreting	1	2
Italian Language and Literature	1	2
Journalism and Media Studies	1	2
Labour Policy and Globalisation	1	2
Honours in the specialisation/fields of studies (continued):		
Linguistics	1	2

HUMANITIES PROGRAMMES	YEARS	
	full-time	part-time
Media Studies	1	2
Migration and Displacement	1	2
Music	1	2
Organisational Psychology	1	2
Philosophy	1	2
Political Studies	1	2
Portuguese	1	2
Psychology	1	2
Publishing Studies	1	2
Sociology	1	2
South African Sign Language	1	2
Labour Policy and Globalisation	1	2
Spanish and Latin American Studies	1	2
Theatre and Performance	1	2
Translation	1	2



HUMANITIES PROGRAMMES ON OFFER	YEARS	
	full-time	part-time
Masters in the field of:		
Master of Arts by Coursework and Research Report	1	2
Master of Arts in Clinical Psychology	3	
Master of Arts in Community-based Counselling Psychology by Coursework and Research Report	2	
Master of Arts in Speech Pathology by Coursework and Research Report	1	2
Master of Arts in Interpreting by Coursework and Research Report	1	2
Master of Arts in Heritage by Coursework and Research Report	1	2
Master of Music by dissertation	1	2
Master of Arts in Occupational Social Work by Coursework and Research Report	1	2
Master of Arts in ICT Policy and Regulation	1	2
Master of Arts by dissertation	1	2
Master of Arts in Audiology by dissertation	1	2
Master of Arts in Social Work by dissertation	1	2
Master of Arts in Applied Drama and Theatre by dissertation	1	2
Master of Arts in Applied Performance by dissertation	1	2
Master of Arts in Arts Therapies by dissertation	1	2
Master of Arts in Speech Pathology by dissertation	1	2
Master of Arts in Translation by dissertation		
Master of Arts in Dramatic Art by dissertation	2	3
Master of Arts in Fine Arts by dissertation	1	
Master of Arts in Heritage by dissertation	1	2
Master of Music by dissertation	1	2
Master of Education in Educational Psychology by Coursework and Research Report	2	
Bachelor of Arts Honours	1	2
Bachelor of Arts Joint Honours	1	2

HUMANITIES PROGRAMMES ON OFFER	YEARS	
	full-time	part-time
Bachelor of Arts Honours in South African Sign Language	1	2
Bachelor of Arts Honours in the field of Psychology (part-time)	1	2
Postgraduate Diploma in Arts	1	2
Postgraduate Diploma in Translation and Interpreting	1	2
Postgraduate Diploma in Dance in Education, Communities and Social contexts	1	2
EDUCATION		
Doctor of Philosophy	2	4
Master of Education by Coursework and Research Report	1	2
Master of Education by dissertation	1	2
Bachelor of Education with Honours	1	2
Postgraduate Diploma in Education in the field of Higher Education	1	2
Postgraduate Diploma in Education in the field of Digital Education and Online Teaching	1	2
Postgraduate Certificate in Education in the field of South African Sign Languages	1	2



HUMANITIES PROGRAMMES ON OFFER	YEARS	
	full-time	part-time
Masters by dissertation, in the fields of:		
African Languages and Linguistics	1	2
African Literature	1	2
Applied Drama: Theatre in Education, Communities and Social Context Archaeology	1	2
Cultural Policy and Management	1	2
Anthropology	1	2
Creative Writing	1	2
Demography and Population Studies	1	2
Development Studies	1	2
Digital Art	1	2
Critical Diversity Studies	1	2
English	1	2
Transnational Literary and Cultural Studies	1	2
Fine Art	1	2
Film and Television	1	2
French and Francophone Studies	1	2
Geography	1	2
German Language and Literature	1	2
Heritage Studies	1	2
History	1	2
History of Art	1	2
Interdisciplinary Arts and Culture Studies	1	2
International Relations	1	2
Interpreting	1	2
Italian Language and Literature	1	2
Journalism and Media Studies	1	2
Labour Policy and Globalisation	1	2
Linguistics	1	2

HUMANITIES PROGRAMMES ON OFFER	YEARS	
	full-time	part-time
Masters by dissertation, in the fields of (continued):		
Media Studies	1	2
Migration and Displacement	1	2
Modern and Contemporary Literature	1	2
Music	1	2
Occupational Social Work	1	2
Philosophy	1	2
Political Studies	1	2
Portuguese Studies	1	2
Psychology	1	2
Publishing Studies	1	2
Social Development	1	2
Sociology	1	2
South African Sign Language	1	2
Spanish and Latin-American Studies	1	2
Theatre and Performance	1	2
Translation and Interpreting	1	2
Transnational Literary and Cultural Studies	1	2
Social Work	1	2



HUMANITIES PROGRAMMES ON OFFER	YEARS	
	full-time	part-time
Research report specialisations/plans:		
African Languages and Linguistics	1	2
African Literature	1	2
Applied Drama: Theatre in Education, Communities and Social Context	1	2
Anthropology	1	2
Applied Ethics for Professionals	1	2
Contemporary Curatorial Practice	1	2
Cultural Policy and Management	1	2
Critical Diversity Studies	1	2
Demography and Population Studies	1	2
Development Studies	1	2
eScience	1	2
Transnational Literary and Cultural Studies	1	2
French and Francophone Studies	1	2
German Studies	1	2
Health Demography	1	2
Health Sociology	1	2
History	1	2
History and Film Documentary	1	2
History of Art	1	2
Labour, Economic and Development Sociology	1	2
Interactive Media Design	1	2
International Relations	1	2
Italian Studies	1	2
Journalism and Media Studies	1	2
Labour Policy and Globalisation	1	2
Linguistics	1	2
Literary Theory and Critical Practice	1	2

HUMANITIES PROGRAMMES ON OFFER	YEARS	
	full-time	part-time
MA Coursework and Research report (continued):		
Migration and Displacement	1	2
Organisational Psychology	1	2
Philosophy	1	2
Political Studies	1	2
Psychology	1	2
Social and Psychological Research	1	2
Publishing Studies	1	2
Social Development	1	2
Sociology	1	2



HUMANITIES PROGRAMMES	YEARS	
	full-time	part-time
PhD specifications/plans:		
Applied Ethics For Professionals	2	4
African Languages and Linguistics	2	4
African Literature	2	4
Anthropology	2	4
Cultural Policy and Management	2	4
Audiology	2	4
Creative Writing	2	4
Critical Diversity Studies	2	4
Digital Arts	2	4
Demography and Population Studies	2	4
Theatre and Performance	2	4
Development Sociology	2	4
Development Studies	2	4
English	2	4
Fine Art	2	4
Migration and Displacement	2	4
French	2	4
General Sociology	2	4
German	2	4
Labour Policy and Globalisation	2	4
History of Art	2	4
History	2	4
Health Sociology	2	4
Heritage Studies	2	4
Interdisciplinary Digital Knowledge Economy Studies	2	4
Interactive Media Design	2	4
Labour and Economic Sociology	2	4
Interdisciplinary	2	4

HUMANITIES PROGRAMMES	YEARS	
	full-time	part-time
PhD specifications/plans (continued):		
International Relations	2	4
Interpreting and Translation	2	4
Occupational Social Work	2	4
Organisational and Institutional Studies	2	4
Italian	2	4
Journalism and Media Studies	2	4
Linguistics	2	4
Media Studies	2	4
Music	2	4
Musicology	2	4
Philosophy	2	4
Political Studies	2	4
Portuguese	2	4
Publishing Studies	2	4
Psychology	2	4
South African Sign Language	2	4
Social Development	2	4
Sociology	2	4
Social Work	2	4
Spanish and Latin-American Studies	2	4
Speech-Language Pathology	2	4
Film and Television	2	4
Translation and Interpreting	2	4
Translation	2	4
Transnational Literary and Cultural Studies	2	4
Social Work	2	4
Interdisciplinary Arts and Culture Studies	2	4



HUMANITIES GRADUATE CENTRE

Get all the information that you need about student life, academic requirements, funding opportunities, and scholarly events from the Humanities Graduate Centre. Open late and on weekends, the Centre is the hub of intellectual and social life for humanities and social sciences students.

Postgraduate training in research methods

Attend methods workshops – facilitated by expert scholars – to help with the development of your research proposal, data collection and analysis and the write-up and presentation of results for publication in academic journals.

Conversations in social and cultural theory

Learn more about the terms and concepts that are integral to contemporary theory and research in the humanities and social sciences, at a number of seminars and colloquia in critical social and cultural theory.

Postgraduate student-initiated research and learning collectives

Access the space and financial resources to initiate your own independent explorations in theory, creative work, and policy-oriented research.

Writing retreats: Training in scholarly writing, presentation and publication

Learn the mechanics and techniques of research proposal writing, conference abstract preparation and submission and the effective presentation of research results at a number of on- and off-campus writing retreats, conferences and seminars.

The scholarly vocation: Preparing PhDs for an academic career

Attend Postdoctoral Fellowship programmes or Post PhD Submission Fellowship programmes for financial and intellectual support before submitting thesis chapters to peer-reviewed publications.

THInK (Transforming the Humanities through Interdisciplinary Knowledge): Towards a new generation of African scholars

This interdisciplinary doctoral studies programme provides support to African postgrads – and especially exceptional black doctoral fellows. Preference is given to those pursuing a career in teaching scholars in the African academy and whose research explores interdisciplinary terrain in unusual and imaginative ways.

Humanities Graduate Centre
✉ mpho.ntseare@wits.ac.za
✉ gradcentre.humanities@wits.ac.za



www.wits.ac.za/humanities/faculties/services/centre

SCHOOL OF SOCIAL SCIENCES

The School of Social Sciences strives to understand all aspects of society in order to improve livelihoods. With research and teaching at its core, SOSS also plays a critical role in facilitating public debates on policy formulation and implementation.

SOSS is committed to:

- Imparting critical and usable skills through excellent teaching methods
- Promoting research that broadens knowledge
- Deepening engagement within the disciplines to create interdisciplinary synergies
- Promoting partnerships with international institutions, particularly across Africa
- Positioning itself at the centre of public debates and dialogue that foster societal understanding and contribute to knowledge that informs public policy

Disciplines:

- Anthropology
- Demography and Population Studies
- Development Studies
- History



www.wits.ac.za/education/

- International Relations
- Labour and Economic Sociology
- Labour Policy and Globalisation
- Migration and Displacement
- Philosophy
- Political Studies
- Sociology

Research Centres and Chairs:

- African Centre for Migration and Society
- Centre for African International Relations
- Global Labour University
- History Workshop
- NRF Chair in Local Histories and Present Realities
- NRF Chair in Critical Diversity Studies
- NRF Chair on Mobility and the Politics of Difference
- Wits Centre for Ethics
- Wits Centre for Diversity Studies



<http://www.wits.ac.za/socialsciences/>

WITS SCHOOL OF EDUCATION

The Wits School of Education offers one of the highest quality postgraduate programmes in education studies in South Africa. Join a thriving local and

international community and benefit from expert tuition and supervision.

- First Rand Foundation Mathematics Education Chair
- SA Numeracy Chair
- UNESCO Chair in Teacher Education for Diversity School and Development

The School offers postgraduate research degrees in key areas, including:

Curriculum, pedagogy and assessment
Educational leadership and policy studies
Science and mathematics education
Languages and literacy education
Higher education
Human rights education
Inclusive education
Deaf education
Educational technology education
Labour market rural education
Postgraduate Diploma in Education in the field of Digital Education and Online Teaching



Sculpture reliefs of the Alphabet
(Centre for Deaf Studies)

SCHOOL OF HUMAN AND COMMUNITY DEVELOPMENT

Choose from a range of professional postgraduate degree programmes in clinical psychology, community-based counselling, organisational and educational psychology, speech pathology and audiology, and social work.

Our research programmes include:	
Research design	Youth identities
Narrative theory and methodologies	Race, racialisation and racism
Organisational change and development	Gender and sexualities
Quantitative and qualitative methodologies	Health communication
Violence and trauma	Rural health and development
Health psychology	Social justice and social protection
Employee health and wellness programmes	Migration and mobility
Psychoanalytic theories and therapies	Spirituality and healthcare
Cognitive neuroscience	Social development
Psychosocial studies	Social policy
Language and thought	LGBTI studies
Mothering and infant health	Learning-teaching and transformation
Employment equity and transformation	Women's studies
Child protection (policy and practice)	Critical childhood studies
Apartheid studies	Occupational social work
Disability studies	

FIND OUT MORE
www.wits.ac.za/shcd/

WITS SCHOOL OF ARTS

The School of Arts offers PhD by both dissertation and by creative work and dissertation. The PhD can be taken in any of the disciplines in the School or can be structured as an interdisciplinary research project.

Choose from a range of disciplines, including:

Digital Arts

An array of Digital Arts subjects is available for postgraduates, covering subjects in Game Design, Game Studies, Interactive Narrative, Culture and Technology in Africa, Digital Culture and Decolonisation, Digital Creative Industries and more in this range of fields.

Interdisciplinary Arts and Culture Studies

The department supports graduate research that investigates questions regarding the interconnections between culture, artistic expression, aesthetics, identities, political economy, technologies, and power relations, and, the relevance of developments, debates, and critical inquiry within the context of both our specific geographical location in Johannesburg/ South Africa/ Africa as well as our positioning within a global context.

Film and Television

Wits Film and Television produces trailblazing filmmakers who challenge and redefine filmmaking processes. Through our established filmmaking programmes, you will develop conceptual creativity, intellectual rigour and strong practical filmmaking capabilities.

MA offered by dissertation or by creative work and dissertation.



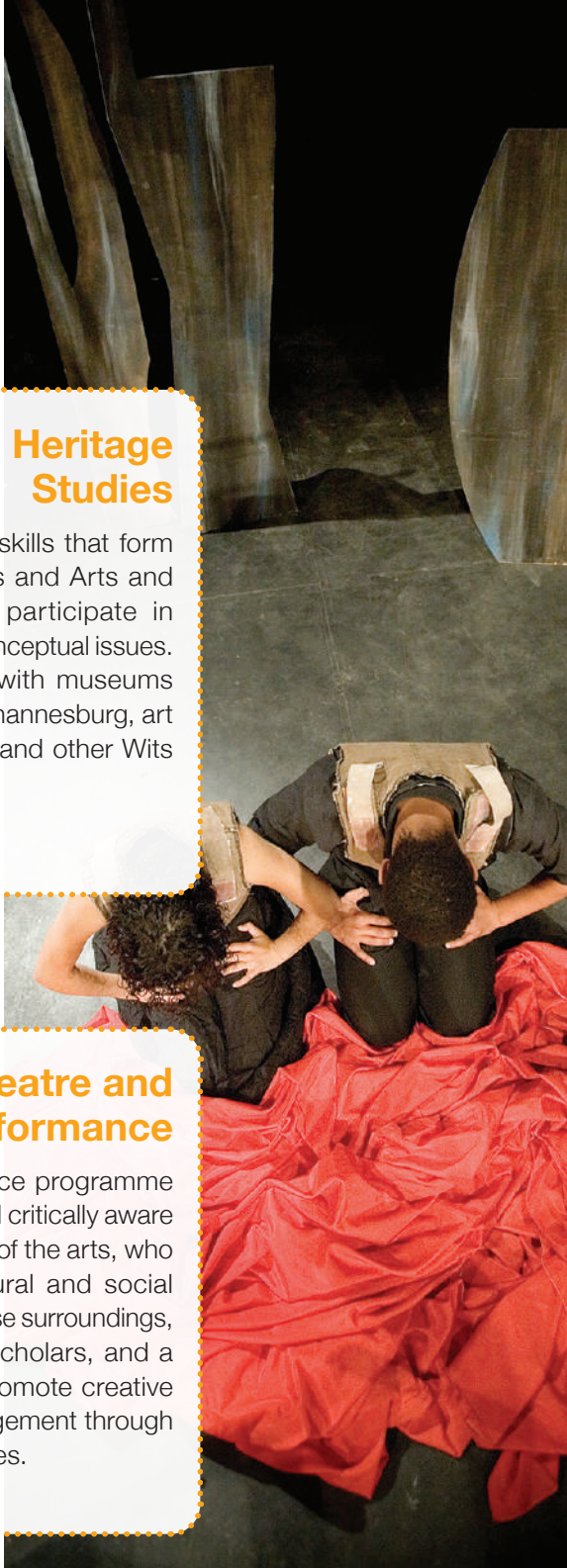
Heritage Studies

Master a range of practical skills that form the core of Heritage Studies and Arts and Culture Management and participate in debates around policy and conceptual issues. Leverage our relationships with museums and archives in the City of Johannesburg, art networks and organisations and other Wits departments.



Theatre and Performance

The Theatre and Performance programme aims to produce informed and critically aware practitioners and consumers of the arts, who are conscious of their cultural and social environment. It draws on diverse surroundings, a committed staff of artist-scholars, and a dynamic student body to promote creative and socially productive engagement through a range of degree programmes.





Drama for Life

Drama for Life educates professional artists, therapists, facilitators and educators in the power of drama to drive social transformation. This is designed for professionals who are research-active, embody and execute ethical practice, and understand, harness, and implement effective arts interventions in education, development and health.



Interactive Digital Media

The Interactive Digital Media programme is designed for students from an arts and design background who want to explore the creative possibilities of interactive digital media technologies. It is suited to students from engineering or science and technology backgrounds who want to develop their creativity in these areas.

The Masters programme brings together passionate individuals from diverse creative and technology/science backgrounds to explore and develop new and exciting interactive media.



Contemporary Curatorial Practice

The Contemporary Curatorial Practice programme explores the evolving roles of curators, the constitution of exhibition audiences and publics, the roles of different forms of display and artistic practice within and outside the white cube. Throughout the course, students are expected to participate in various practical projects with partner institutions, structured to give them the opportunity to engage with different forms of writing and producing exhibitions.



Fine Arts

Fine Arts combines technical training in artistic production with conceptual and creative thinking. Our location in Johannesburg gives us the freedom to incorporate exciting site-specific components and a dynamic exhibitions programme into the course.



History of Art

The History of Art programme places a dual emphasis on the condition of our postcoloniality and curatorial practices as core components of the construction of knowledge in the discipline. Students regularly go on to successful careers in curating, museums, galleries, filmmaking, fine arts, advertising, auction houses, filmmaking and journalism.



Music

Wits Music is one of South Africa's most innovative higher education music departments, preparing students for diverse musical careers in the contemporary world.

SCHOOL OF LITERATURE, LANGUAGE AND MEDIA

Explore the implications of social and cultural diversity through the study of language, literature, writing, media studies, policy and regulation in electronic communications.

The SLLM provides prestigious programmes in African and world literature, an extensive language offering, and an expanding Media Studies programme. It contributes to the vibrant literary and intellectual life of the City of Johannesburg and offers the premier graduate programme in Journalism in Africa.

As well as academic postgraduate programmes, the SLLM serves Johannesburg's writing community through professional postgraduate programmes in creative writing, journalism, publishing, and translation and interpreting. It also hosts public events aimed at facilitating engagement with the broader academic community and public culture institutions.

In line with its interdisciplinary ethos, the School encourages postgraduate students to select and register for courses across its departments. Please contact the departments for advice on interdisciplinary curriculum options.

Fields of study include:

Creative Writing

MA students register for a 2-year programme in which a creative project in fiction, non-fiction or poetry, as well as a reflective essay are completed. PhD candidates are expected to produce a substantial creative project (a novel, a collection of stories or essays, etc.) plus a scholarly dissertation that extends and supports the creative work.

Linguistics

Phonology, especially Optimality Theory approaches to African languages

Syntax and Morphology

Historical Linguistics

Psycholinguistics, especially gestures and second language acquisition

Critical Discourse Analysis and Social Semiotics

Sociolinguistics of globalisation, race, colonialism, gender and sexuality

Translation and Interpreting Studies:

Language and translation policy

African cultures, languages and literatures

Translation and interpreting in the Global South

Sign languages

Literary translation

Interpreter and translator training

Translation theory

Multilingualism

Neurocognition linked to translation and interpreting



www.wits.ac.za/sllm/



Fields of study include:

English

Shakespeare studies

Speculative Fiction (Sci-Fi, Gothic, Utopia/Dystopia, Apocalypticism)

Literary non-fiction: forms and debates

Eco-criticism, climate change literature

Literary Modernisms: Imperialism and Internationalism, Writing the City, postmodernism

Contemporary literature, New forms & critical paradigms

Literary theory

Writing Gender, Sex and Queer Theory

Literature and historiography

Narrative Theory and New Media

Media Studies

Multiple aspects of popular and consumer cultures

Democracy

Policy and decoloniality

Digital media

Interactivity and internet practices

French

Comparative Anglophone-Francophone literature

Sub-Saharan African and diasporic literature in both French and English

Négritude and/or Négritudinists

Caribbean Francophone literature

Afropean literature and Afropolitanism in literature

Feminist literary criticism

Literary translation

Second language acquisition and multilingualism

French foreign language and literature pedagogies

Autobiography in contemporary Francophone literature

Publishing Studies

African book and reading cultures

Reading and book buying in South Africa

Literacy in the Global South

Indigenous knowledge and languages

Distribution and circulation of information

Book and literary histories in Africa

Market and readership analysis

Publishing in South Africa and issues of accessibility

German

Goethe and his period (including Jean Paul, Kleist, Herder, etc.)

Contemporary German literature

GDR literature (Anna Seghers, Monika Maron, Jürgen Fuchs, etc.)

Comparative literature (Nietzsche and Musil, Thomas Mann, etc.)

Che Austrian novel

Literary theory, especially Roland Barthes

Literature and philosophy

Women's writing/gender studies

Interculturalism and transnationalism

Disciplinary paradigms, identities and imaginaries

Didactics of literature in foreign language teaching/learning contexts

Fiction writing

Editing and production of local materials

Content creation and distribution

Financial management and commissioning of books

Strategic sales management

Journalism

A career entry route for graduates who want to become journalists, or a mid career route for working journalists who wish to develop their skills and knowledge, are both offered.

Fields of study include:

African Literature

All modules use English-language material, and all courses are taught in English. Familiarity with an African language is an advantage, but not a requirement. Teaching areas include:

African Literary and Cultural Studies

Black Intellectual Traditions

Indian Ocean Studies

Critical literary theories

Gender and Queer Studies

Ecocritical Studies

Oceanic humanities

Book history and print culture

Postcolonial studies

Drama and film studies

Memory and representation

African Languages

Alternative Film Studies in Cinema and Television

Linguistics in African languages

Sociolinguistics

Language Policy and Planning

Onomastics

Sociology of African language Media Text Production

African language literature

Spanish

Comparative Hispanic Literature

Contemporary literature in Spanish

Literature from Latin America and Equatorial Guinea

Diasporic literature

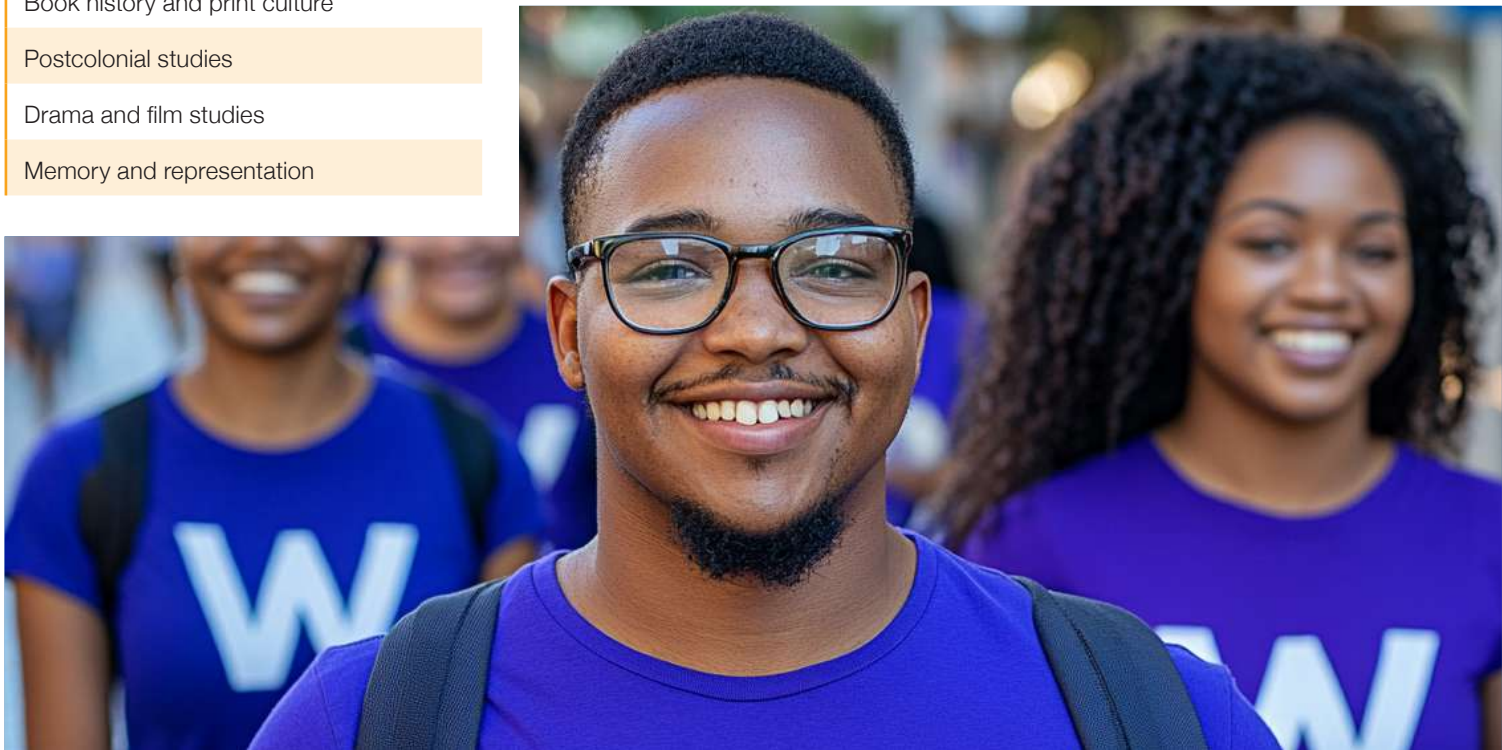
Migration and exile literature

Women's writing

Interculturalism and transnationalism

Postmodernism and postcolonialism

Pedagogies of Spanish as a foreign language and literature





FACULTY OF SCIENCE



FACULTY OF SCIENCE

The Faculty of Science is among the top 1% of global institutions for research citations, in everything from geosciences, environmental studies and ecology, to chemistry, plant and animal sciences and physics.

Our research institutes in Global Change, Evolutionary Sciences, and Molecular Biosciences – as well as our globally recognised qualifications – make ours a leading science research and teaching facility.

Our goal is to stay at the forefront of the latest scientific developments and we pride ourselves on the partnerships and academic staff that enable this.

Our programmes equip students with various research techniques and prepare them to pursue research at the highest levels in experimental, theoretical, computational and applied sciences.

Pursue an Honours degree, Masters degree by dissertation or coursework and research report, or Doctoral degree by thesis across diverse subject areas and support your research with state-of-the-art analytical facilities in the Microscopy and Microanalysis Unit and other schools at Wits.

Learn from internationally respected scientists, get support through world-class supervision and research programmes, and attend national and international conferences that prepare you to publish your research in leading international journals.

OUR RESEARCH

Wits, as part of a consortium of six universities, is leading a drive to develop local e-Science (data science) research skills and capabilities. To this end, we implemented the National e-Science Postgraduate Teaching and Training Platform (NEPTTP), a DSI-CSIR initiative aimed at advancing training in e-Science fields.

With the relevant data science skills and knowledge, you could work on exciting projects, such as the South African Research Infrastructure Roadmap and the Square Kilometre Array (SKA) telescope.

www.wits.ac.za/machine-learning-ai-robotics



13 of the 26 A-rated researchers at Wits are from the Faculty of Science.

WHY CHOOSE THE WITS FACULTY OF SCIENCE?

- Our researchers are members of large multinational collaborations, including the ATLAS, ALICE at the Large Hadron Collider (LHC) and ISOLDE Collaborations at CERN, the MeerKAT Large Survey Projects and Square Kilometre Array Key Science Projects, the High Energy Stereoscopic System, the Cherenkov Telescope Array, the Cubic Kilometre Neutrino Telescope and Event Horizon Telescope.
- The School of Physics hosts the High-Throughput Electronics Laboratory, which deals exclusively with big data projects.
- You can study the origin, distribution, and character of Earth's mineral and fossil energy resource systems at the DSI-NRF Centre of Excellence for Integrated Mineral and Energy Resource Analysis.
- Engage with 14 institutions across the country on how pure and applied mathematics, statistics, and computer science can address issues such as rhino poaching, climate change and big data, at the DSI-NRF Centre of Excellence in Mathematical and Statistical Sciences.
- Access South Africa's leading protein structure research group, the Protein Structure-Function Research Unit.
- The Mandelstam Institute conducts research in Theoretical High Energy Physics, Cosmology and Quantum Matter and is widely regarded as the leading university-based theoretical physics research group in Africa. It also hosts the Gauteng node of the National Institute for Theoretical Physics.
- Our academic staff and researchers have made game-changing discoveries, including:
 - The discovery of the most complete early hominin fossils, new species of early human ancestors and a new species of human relative, *Homo Naledi*
 - A breakthrough in the field of Alzheimer's disease and therapeutic tools for the treatment of metastatic cancer types
 - Overturning ideas about how some mountain landscapes are formed, and
 - Reporting the first evidence of a comet fragment found on Earth
- The Faculty hosts the Centre of Excellence in Strong Materials and Catalysis.



SCIENCE PROGRAMMES ON OFFER	YEARS	
	full-time	part-time
Doctor of Philosophy, in the fields of: <ul style="list-style-type: none"> Actuarial Science Animal, Plant and Environmental Sciences Archaeology Chemistry Computational and Applied Mathematics Computer Science Geography and Environmental Studies Geology Geophysics Palaeontology Mathematics Molecular and Cell Biology Physics Mathematical Statistics 	2	4
Master of Science by coursework and research report, in the fields of: <ul style="list-style-type: none"> Artificial Intelligence Astrophysics Computational and Applied Mathematics Computer Science Data Science Economic Geology Environmental Sciences e-Science Geographical Information Systems and Remote Sensing Hydrogeology Interdisciplinary Global Change Studies Mathematics Mathematical Sciences Mathematical Statistics Medical Physics Radiation Protection Resource Conservation Biology Robotics 	1	2
Bachelor of Science Honours, in the following: <ul style="list-style-type: none"> Actuarial Science Animal, Plant and Environmental Sciences Applied Bioinformatics Archaeology Big Data Analytics Biochemistry and Cell Biology Chemistry Computational and Applied Mathematics Computer Science Genetics and Developmental Biology Environmental Studies Geochemistry Geography Geography, Archaeology and Environmental Studies Geology Geophysics 	1	2

SCIENCE PROGRAMMES ON OFFER	YEARS	
	full-time	part-time
Bachelor of Science Honours, in the following, (continued): <ul style="list-style-type: none"> Mathematical Sciences Mathematical Statistics Mathematics Microbiology and Biotechnology Palaeontology Palaeontology and Geology Physics Psychology 	1	2
Master of Science by dissertation, in the fields of: <ul style="list-style-type: none"> Actuarial Science Animal, Plant and Environmental Sciences Archaeology Chemistry Computational and Applied Mathematics Computer Science Geography and Environmental Studies Geology Geophysics Mathematics Mathematical Statistics Molecular and Cell Biology Palaeontology Physics Statistics 	1	2
Postgraduate Diploma in Science, in the fields of: <ul style="list-style-type: none"> Data Science Innovation and Entrepreneurship 	1	2

Postgraduate Enquiries ✉ science.pg@wits.ac.za

MSc Enquiries ✉ science.msc@wits.ac.za

PhD Enquiries ✉ science.phd@wits.ac.za

APPLYING TO WITS

GENERAL ADMISSION REQUIREMENTS

The requirements below are only a guideline. Final selection is based on availability of places, academic results and other entry requirements where applicable.

Doctorate: The candidate must have a Masters level degree.

Senior Doctorate: The candidate is required to apply directly to the relevant Faculty. An *ad hoc* committee of the Faculty board will ascertain whether a *prima facie* case exists for admission of the candidate.

Masters: The candidate must have an appropriate qualification taken over a minimum of four years of study.

Honours: The candidate must be a graduate with an appropriate qualification.

Postgraduate diploma or certificate: The candidate must be a graduate with an appropriate qualification.

PLEASE NOTE

Unless special permission is obtained from the Senate, no person may be registered as a student of Wits University while he/she is registered as a student of another university. The permission of the Senate is also required to register for more than one degree or diploma in the same Faculty in the same academic year. No person may register as a student in more than one Faculty in the same academic year, unless the written authority of the Dean/s is obtained. We make every effort to ensure that the information published here is accurate, but we reserve the right to make changes to:

- › The programmes on offer
- › The curricula programme
- › The offering schedule and calendar.

DID
YOU
KNOW?

Wits researchers in the Structured Light Laboratory have transmitted data and images securely through light.

HOW TO APPLY FOR POSTGRADUATE STUDY AT WITS



1 Use the course finder at www.wits.ac.za/postgraduate/ to confirm the entry requirements and closing dates for your programme of study.



2 Complete an online application form at www.wits.ac.za/applications/



3 Certain programmes require additional departmental forms. Complete and return these forms within the timeframes for submission. The University will withdraw incomplete applications.



4 Please note that for all pure research applicants, before being admitted to a research degree, a candidate needs to approach the HOD for the particular School or department to discuss choice of research topic and availability/suitability of a supervisor. This has to be done before an application can be made.



5 Upload supporting documents (certified within the last three months) via the self-service portal: <https://self-service.wits.ac.za/>
Click on:
<https://bit.ly/3kfc5RQ>
<https://bit.ly/32JaWvW>
for helpful information regarding document requirements.



6 Successful applicants will be able to accept an offer without submitting certified hard copies of academic qualifications. However, the University will verify any information/documents submitted and immediately cancel your registration, record such action against your record, and take necessary legal action in the event that any fraudulent document/s and/or other misrepresentation has been provided.



7 Pay the application fee of R200. Current Wits students who apply online do not need to pay this fee.



8 Once your application is complete, it is referred to the relevant School for assessment. Each application is considered individually. There is no set time frame for decision-making. Most Schools make a final decision at the end of the academic year or at the beginning of the new academic calendar.



9 You can monitor the progress of your application on the self-service portal. <https://self-service.wits.ac.za/>

Wits University Application Fees	
First National Bank (FNB)	
Account number	6307 5484 302
Branch	251905
Reference	Person Number
Swift Code	FIRNJJ (International students only)

WHAT DOCUMENTS DO YOU NEED?

1. **Certified copies of all degree certificates and a full academic transcript covering all periods of registration**

This must include details of the courses you took and the marks you obtained, and feature an original Commissioner of Oaths' stamp and signature. A sworn translator must translate any documents not in English. However applicants are required to submit both the original as well as the sworn translation. Statements of Credit and Credit certificates are not acceptable. Applicants who are currently studying are required to upload their final academic record only once their final results become available towards the end of the academic year.

2. **Curriculum Vitae (CV)**

This must showcase your work experience, educational background and skills.

3. **A short outline (no more than one typed page) of your intended research area for Masters (by research) and PhD applicants only.**

Please note that this not a requirement for Health Sciences. If you are applying for a Master of Arts programme, you must provide a sample of your research work or a long essay written in or translated into English.

4. **Proof of evaluation of your qualification**

If you hold a foreign qualification, you must submit proof of evaluation of your qualification by the South African Qualifications Authority (SAQA).

Contact SAQA:

☎ +27 12 431 5000

✉ saqa@saqa.org.za

5. **Proof of English language proficiency**

If your qualification is not from an English medium institution, you must submit proof (a letter from your institution) of English language proficiency. Wits accepts the International English Language Testing System as well as Cambridge English Language Assessment.



INTERNATIONAL STUDENTS

The International Students Office (ISO) is here to assist with general enquiries from prospective students, immigration advice and advocacy, recommendations on safety and general guidance about your stay at Wits.

We complement the services provided by faculties and departments and have strong relations with service providers within and outside of Wits.

In cooperation with the Strategic Partnerships Office, the International Students Office also facilitates the Semester Study Abroad Programme as well as other programmes creating opportunities for Wits students to study and conduct

The International Students Office strives to ensure that:

- Wits remains the preferred study destination for international students
- Throughout integration programmes, students from diverse cultures and backgrounds get a high-quality and life-changing experience
- Wits remains a highly sought after university for international academic partnerships



INTERESTED IN STUDYING AT WITS? HERE'S WHAT YOU NEED TO KNOW.

1. All postgraduate international students when applying to Wits must:
 - Pay a R200 application fee, and
 - Provide the South African Qualification Authority (SAQA) certification for the evaluation of foreign qualifications.

Before being permitted to register at Wits, international students must obtain clearance first. Students must show proof of:

- the required visa
- payment of 75% of the annual tuition fees and related costs as per the Fees Estimate, and
- South African medical aid cover.

FIND OUT MORE

- ☎ +27 11 717 1054
- ✉ studysa.international@wits.ac.za
- 🖱 www.wits.ac.za/internationalstudents

CAMPUS HOUSING AND RESIDENCE LIFE (CHRL)

Campus Housing and Residence Life (CHRL), a division of Student Affairs, is responsible for overseeing all aspects of the University's residence programmes, including accommodation and meals and the provision of recreational facilities and programmes to improve academic performance and holistically develop students within a residential environment.

HOW TO APPLY FOR HOUSING

New students or first-time residence applicants:

- **Residence applications are done online.**
- **Before you are admitted to a residence, you will be required to pay R10000 of your residence fees for the year.**
- **International students are required to pay 75% of their residence fees.**
- **Bursary students must provide proof of their bursary upon registration.**
- **The closing date for accommodation applications is 30 October.**

To apply for residence go to
<https://self-service.wits.ac.za/>

FUNDING OPTIONS

The University offers various scholarships, bursaries and other funding opportunities for its postgraduate students from both internal and external sources. There is a live database of all these opportunities that is regularly updated.

Refer to the link to access the funding portal:

<https://www.wits.ac.za/funding-portal/>

WITS POSTGRADUATE MERIT AWARD AND MERIT SCHOLARSHIP

This award helps graduates to complete their Honours, Masters or PhD degrees by research or by a combination of course work and research – on either a full – or part-time basis. A maximum of R53 800 in tuition fees is awarded to qualifying students.

Please note:

- This award does not fund undergraduate professional degrees including LLB, MBChB, BSc Eng, and BEd, as well as postgraduate diplomas, advanced diplomas or postgraduate certificates.
- This award does not cover accommodation, international registration fees, clubs and societies or parking.

The Postgraduate Merit Award is based purely on academic merit and the availability of funds. No application is necessary.

HAROLD AND DORIS TOTHILL SCHOLARSHIPS

This scholarship is available to all full-time Masters and PhD students studying in the English field. A special committee decides on the amount awarded to qualifying candidates. Applications are dependent on the availability of funds.

EXTERNAL STATUTORY FUNDING

Postgraduate students can apply for several of the following funding opportunities:

1. National Research Foundation (NRF)

The NRF offers scholarships for Honours, Masters and PhD students. The Free-standing, Innovation and Scarce Skills NRF scholarships are offered to full-time students who are South African citizens and permanent residents. A small percentage is awarded to non-South African citizens.

CLOSING DATE

31 March

Apply online:

www.wits.ac.za/study-at-wits/student-fees/

www.wits.ac.za/study-at-wits/financial-aid-and-scholarships-administration/

2. NRF Square Kilometre Array (SKA)

The NRF SKA Scholarship is available for South African citizens who wish to study their Honours, Masters or PhD degree majoring in Astronomy and/or Astrophysics.

Apply online:

<https://skagrants.nrf.ac.za>

3. Mandela Rhodes Scholarship

The Mandela Rhodes Foundation Scholarship aims to help build leadership-excellence in Africa.

The Mandela Rhodes Foundation offers young Africans who exhibit academic prowess as well as broader leadership potential an educational opportunity unique on the continent. While pursuing their chosen postgraduate degree, each scholar benefits from access to leadership development programmes, rooted in the principles underpinning the Foundation.



In addition to the opportunity to interact with a diverse group of fellow-scholars that spans the continent and academic disciplines, Mandela Rhodes scholars become part of a wide-ranging network of young Africans of excellence who are expected to play leadership roles in their fields and societies in the years following their time in residence.

Wits graduates are nominated for the Mandela Rhodes Scholarship and those selected for the award are generously assisted in advancing their studies.

The Mandela Rhodes Scholarship is available to full-time students who are citizens of African countries.

Registered Wits students under the age of 30 studying towards their Honours or Masters degrees can apply online at:

www.mandelarhodes.org

Witsies who made the Mandela Rhodes Scholarships list in 2021



Sibongiseni Mkhonta

Kingdom of eSwatini & University of the Witwatersrand, 2024


Sibongiseni Mkhonta holds a Metallurgy and Materials Engineering degree from University of the Witwatersrand. Her academic excellence earned her a prestigious award from the Southern African Institute of Mining and Metallurgy for being the top performing student in her final year. She launched her career in banking, where she worked at FirstRand Bank as a quantitative graduate trainee across various divisions such as group treasury and market risk. She then worked at Liberty as a treasury specialist where she was responsible for funding and liquidity management.

Moreover, Sibongiseni is a technology entrepreneur and finance professional with a passion for the application of technology in finance and investments. She is a visionary entrepreneur who co-founded FinanceGPT, an innovative platform that aims to empower businesses, irrespective of size, to access

comprehensive financial insights enabling them to make informed business decisions and drive growth. Sibongiseni's passion for financial technology stems from her belief that it can be a catalyst for transforming small businesses and empowering their founders to create lasting impact.

Her ability to merge her love for finance and technology has set her apart as a leader in her field. Her work has been covered by various industry publications such as TechCrunch and Tech In Africa. One of her entrepreneurial achievements, FinanceGPT, was named Top 8 Fintech startup in Africa by Ecobank and Top 19 Fintech startup in the world by the monetary authority of Singapore. With a Master of Management in Finance and Investment from Wits Business School and her entrepreneurial spirit, Sibongiseni is poised to continue changing the finance industry.

**Contact the PG Funding
Office for closing dates on:**

 +27 11 717 1073

 +27 11 717 1062



www.wits.ac.za/study-at-wits/student-fees/

FEES

NOTE: At the time of going to print, the tuition fees for 2025 were not available. These are the approximate tuition fees for the first year of study in 2024. Fees may increase by approximately 5% or more. The approach for final fee determination is guided by DHET recommendations, which are yet to be finalised. Please note that the fees listed are for South African citizens only

COMMERCE, LAW AND MANAGEMENT

Postgraduate qualifications (Average tuition fee per programme)

FACULTY OF COMMERCE, LAW AND MANAGEMENT	
Qualification	Amount
PGDip in Accountancy	R71,760
PGDip in Taxation	R52,160

FACULTY OF COMMERCE, LAW AND MANAGEMENT	
Qualification	Amount
PGDip in Specialised Accountancy	R60,480
PGDip Law	R45,800
PGDip in Business Admin	R110,960
PGDip in Management	R50,500 – R103,840
PG Dip in Accountancy (Distance)	R73,400
PGDip in Business Admin (Distance)	R110,960
PG Dip in Management (Distance)	R60,960 – R98,600
BAccSciHons	R78,480
BEconSciHons	R50,930
BComHons	R46,220 – R52,580
MBA R328,21	R79,620 – R84,790
Masters of Commerce (Coursework and Research Report)	R82,450
Master of Economic Science (Coursework and Research Report)	R82,450
Master of Laws (Coursework and Research Report)	R68,940 – R80,390
Master of Management	R88,390 – R189,970

FACULTY OF COMMERCE, LAW AND MANAGEMENT

Qualification	Amount
RESEARCH PROGRAMMES PER YEAR OF STUDY	
LLM by research, full-time	R25,680
LLM by research, full-time second term	R12,920
LLM by research, part-time PART	R17,110
PART 1B: AVERAGE TUITION - FEES 2024	
LLM by research, part-time, second term	R9,040
MCom by research, full-time	R31,780 – R33,107
MCom by research, full-time, second term	R16,112 – R16,774
MCom by research, part-time	R20,421 – R21,230
MCom by research, part-time, second term	R13,580 – R14,240
MM by research, full-time	R39,940
MM by research, full-time, second term	R19,970
MM by research, part-time	R26,640
MM by research, part-time, second term	R13,350
PhD by research, full-time	R 27,590 – R37,520

ENGINEERING AND THE BUILT ENVIRONMENT

Postgraduate qualifications (Average tuition fee per programme)

FACULTY OF ENGINEERING AND THE BUILT ENVIRONMENT

Qualification	Amount
POSTGRADUATE QUALIFICATIONS – AVERAGE TUITION FEE PER PROGRAMME	
PGDip(Eng)	R76,730 -R80,520
PGDipPDM(Property Development and Management)	R92,970
PGDip(Construction Management)	R74,200
PGDipPlanning	R57,900
BAS(Hons)	R79,510
BSc(Hons)(CM)	R95,800
BSc(Hons)(QS)	R95,800

FACULTY OF ENGINEERING AND THE BUILT ENVIRONMENT

Qualification	Amount
BSc(Hons)(URP) R86 340	R76,730 -R80,520
BSc (Hons) (Property Studies) R89 610	R92,970
MArch(Prof) R85 180	R74,200
MEng (Prof) R114310 – 119330	R57,900
MSc(Building) R105720 - 106240	R79,510
MSc(DP) R80 730	R95,800

PART 1B: AVERAGE TUTION - FEES 2024

MSc(Eng)	R114,310 -120,990
MSc(AeroEng (Embry-Riddle)(Over two years)	R236,634
MScBulkMaterialsHandling	R114,310
MSc (EngMan)	R114,310
MSc Industrial Eng	R114,310
MSc(MechEng)	R114,310
MSc(SysEng)	R114,310
MUD	R87,130
MUS	R86,350 - 86,990

RESEARCH PROGRAMMES PER YEAR OF STUDY

Masters by research, full-time	R34,800
Masters by research, full-time, second term	R19,100
Masters by research, part-time	R25,400
Masters by research, part-time, second term	R12,800
PhD by research, full-time	R36,200
PhD by research, full-time, second term	R18,200
PhD by research, part-time	R24,000
PhD by research, part-time, second term	R12,140

HEALTH SCIENCES

Postgraduate qualifications (Average tuition fee per programme)

FACULTY OF HEALTH SCIENCES	
Qualification	Amount
PGDip Occupational Therapy	R53,310
PDip Child Health	R61,340 – R63,080
PGDipHS Management	R59,870
PGDip in Physiotherapy	R48,970
PGDip Occupational Health	R34,560
PDip Public Health	R53,380 – R73,090
PDip Tropical Medicine and Hygiene	R46,250
PDip HS Education	R38,160
Honours	R53,320 – R56,910
(MDENT AND MMED HOLDERS OF APPROVED POSTS ARE ENTITLED TO 90% REMISSION OF FEES)	
M Dent	R150,980 – R239,800
MMed	R39,320 – R154,860
MPH	R74,160 – R82,460
MHSc (Ed)	R94,320
MSc(Dent)	R83,990
MScMed	R60,290 – R89,490
MSc (Epi)	R74,000 – R91,030
MSC OT by Coursework and research report	R61,470
MSc Physio by coursework and research report	R57,270
MSc Nursing	R58,800
RESEARCH PROGRAMMES (PER YEAR OF STUDY)	
Masters by Research, full-time	R39,690
Masters by Research , full-time, second term	R20,070
Masters by Research, part-time	R26,460



www.wits.ac.za/study-at-wits/student-fees/

FACULTY OF HEALTH SCIENCES

Qualification	Amount
Masters by Research, part-time, second term	R13,390
PhD by Research, full-time	R34,520
PhD by Research, full-time, second term	R17,440
PhD by Research, part-time	R23,000
PhD by Research, part-time, second term	R11,640

HUMANITIES - Postgraduate qualifications (Average tuition fee per programme)

FACULTY OF HUMANITIES

Qualification	Amount
PGDA (Applied Drama and Theatre Studies)	R46,360
PGDA (Dance in Education, Communities and Social Contexts)	R37,550
PGDipIn- Interpreting	R73,620
PGDipIn- Translation	R38,100
PDE	R35,150
PDE(Deaf Education)	R37,360
PGCE FT	R47,770
PGCE PT	R47,900
PGDip(HE)	R37,360
PG Dip (Digital Educ and Online Teaching)	R37,360
BAHons	R41,950 - R62,000
BA Hons in Translation – Interpreting	R75,930
BEd (Hons)	R45,370

PART 1B: AVERAGE TUTION - FEES 2024 (MA BY COURSEWORK AND RESEARCH REPORT)

African Lang and Ling	R53,080
African Literature	R53,080
Applied Drama: Theatre in Education	R53,250

FACULTY OF HUMANITIES

Qualification	Amount
Anthropology	R53,080
Applied Ethics for Professionals	R80,370
Contemporary Curatorial Practice	R53,080
Critical Diversity Studies	R53,080
Cultural Policy and Management	R53,080
Demography and Population Studies	R53,080
Development Studies	R53,080
Drama Therapy	R53,250
e-Science	R57,700
French and Francophone Studies	R53,080
Gender Studies	R53,080
German Studies	R53,080
Global South	R53,080
Health Demography	R53,080
Health Sociology	R53,080
History	R53,080
History and Film Documentary	R53,080
History of Art	R53,080
ICT Policy and Regulation	R67,370
Interactive Media Design	R53,250
International Relations	R53,080
Italian Studies	R53,080
Journalism and Media Studies	R53,080
Labour, Economic and Dev Sociology	R53,080
Labour Policy and Globalisation	R53,080
Linguistics	R53,080
Literary Theory and Crit Prac	R53,080
Migration and Displacement	R53,080
Modern and Contemporary Literature	R53,080
Organisational and Institutional Studies	R53,080

FACULTY OF HUMANITIES

Qualification	Amount
Organisational Psychology	R65,350
Philosophy	R53,080
Political Studies	R53,080

PART 1B: AVERAGE TUITION - FEES 2024

Politics and Gender	R53,080
Psychology	R65,640
Publishing Studies	R53,080
Social Development	R60,640
Sociology	R53,080
Social and Psyc Research	R65,640
MA (Audiology)	R46,210
MA(Clin Psych)(over two years of study)	R84,980
MA (Comm-based Counselling Psych)(over two years of study)	R84,980
MA (Heritage)	R53,080
MA Theatre and Performance	R53,080
MA (Translation)(Interpreting)	R94,180
MA (Translation)(Translation)	R62,740
MA (Social Work) in the field of Occ Social Work	R59,500
MA(Social Work) in the field of School Social Work	R59,500
MA(Speech Pathology)	R46,210
MEd by coursework and research report (General)	R40,920
Med (Ed Psychology)	R72,650

RESEARCH PROGRAMMES (PER YEAR OF STUDY)

Masters by research, full-time	R31,100
Masters by research, full-time, second term	R16,600
Masters by research, part-time	R20,710
Masters by research, part-time, second term	R10,520
PhD by research, full-time	R27,970 - R30,800
PhD by research, full-time, second term	R14,300 - R15,670
PhD by research, part-time	R18,700 - R20,600

HUMANITIES - Postgraduate qualifications

(Average tuition fee per programme)

FACULTY OF HUMANITIES	
Qualification	Amount
PhD by research, part-time, second term	R9,520 - R10,510
MEd by research, full-time	R32,120
MEd by research, full-time, second term	R16,360
MEd by research, part-time	R21,410
MEd by research, part-time, second term	R10,910
PhD by research, full-time	R28,790
PhD by research, full-time, second term	R14,700
PhD by research, part-time	R19,240
PhD by research, part-time, second term	R95,780

SCIENCE - Postgraduate qualifications

(Average tuition fee per programme)

FACULTY OF SCIENCE	
Qualification	Amount
Honours	R46,280 – R55,190
Postgraduate Diploma: Enterprise Risk Management	R51,840
Postgraduate Diploma: Data Science	R51,870
Postgraduate Diploma: Innovation and Entrepreneurship	R57,370
MSc by coursework and research report	R44,310 – R74,710
RESEARCH PROGRAMMES (PER YEAR OF STUDY)	
MSc by research, full-time	R28,800 – R39,730
MSc by research, full-time, second term	R14,680 – R20,085
MSc by research, part-time	R19,200 – R26,590
MSc by research, part-time, second term	R10,370 – R13,450
PhD by research, full-time	R27,480 – R30,690
PhD by research, full-time, second term	R13,800 – R15,340
PhD by research, part-time	R14,900 – R15,550
PhD by research, part-time, second term	R9,190 – R10,270



UNIVERSITY OF THE
WITWATERSRAND,
JOHANNESBURG

100
1922
2022

#WITSFORGOOD